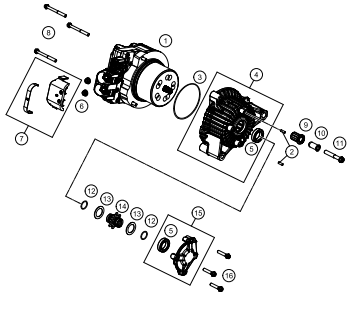


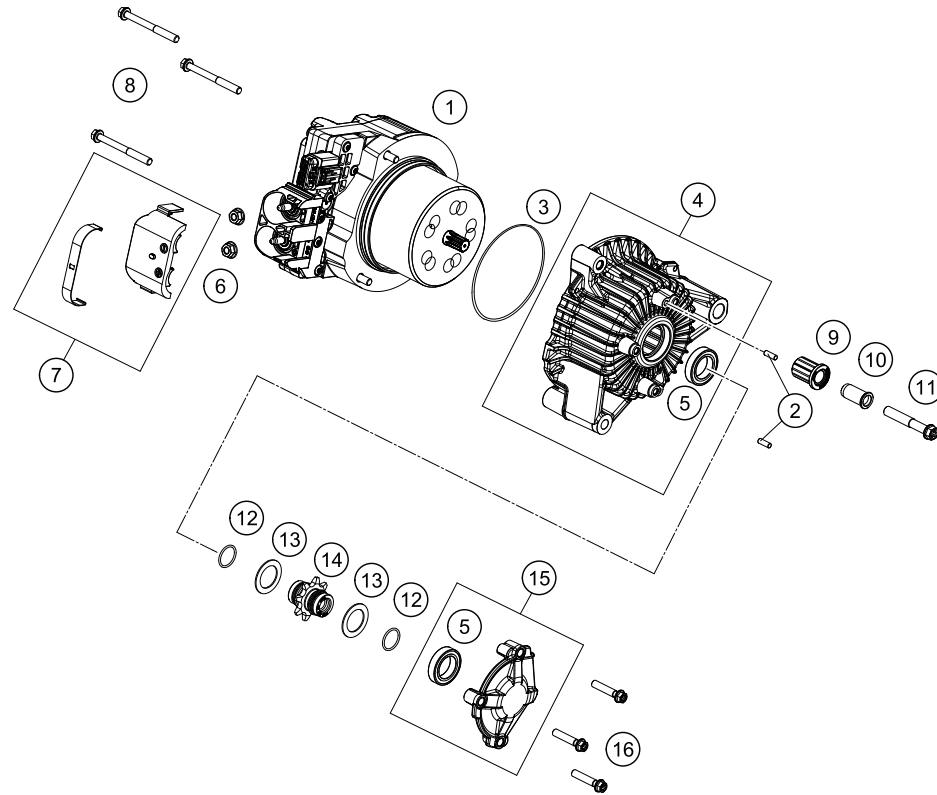
# Engine SX-E 5 2020

ART.-NR.: 080870TEN





<p><b>ENGINE CASE</b></p>  <p><b>2</b></p>			



POS	PARTNUMBER	PARTNAME	PIECE
1	45445050100	Electric motor Mini E	1
2	0402041180	NEEDLE BEARING NRB 4X11,8	2
3	07708902701	O-ring 78 x 2 Viton black	1
4	45445003133	Housing compl.	1
5	0625068040	Grooved ball bearing 61804-2RS	2
6	06923060007	Hex.nut w.flange DIN6923-M6-10	2
7	45445050010	Protection cap, engine connections	1
8	0025060606	HH collar screw M6x60 TX30	3
9	61005013000	RUBBER SILENCER SUPPORT 05	1
10	61005014000	SLEEVE SILENCER SUPPORT 05	1
11	0025080506	HH collar screw M8x50 TX40	1
12	0770017015	O-RING 17X1,5 NB75	2
13	45445021000	Stop disc	2
14	45445018018	Pinion shaft assy	1
15	45445040133	Bush bridge compl..	1
16	0025060306	HH collar screw M6x30 TX30	3

204543010

53172

\* NEW PART

X ON DEMAND



WWW.KTM.COM



KTM Sportmotorcycle GmbH  
5230 Mattighofen, Austria  
[www.ktm.com](http://www.ktm.com)



**KTM**\_POWERPARTS

**KTM**\_POWERWEAR

**KTM**\_ORIGINAL SPARE PARTS



080870TEN

Art. Nr.: 080870TEN 26. Aug 2019