

Electric motor Mini E

ART.-NR.: 45445050100EN





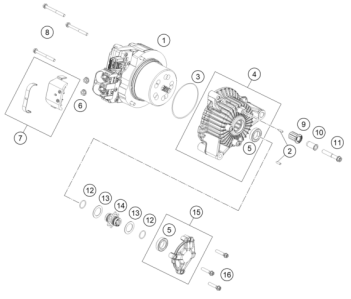
All information contained is without obligation. KTM Sportmotorcycle GmbH particularly reserves the right to modify any equipment, technical specifications, prices, colors, shapes, materials, services, service work, constructions, equipment and the like so as to adapt them to local conditions or to cancel any of the above items, all without previous announcement and without giving reasons. KTM may stop manufacturing certain models without previous notice. KTM shall not be held liable for any deviations of availability and/or ability to deliver, illustrations, descriptions, printing and/or other errors. The illustrated models partly contain extra equipment, which is not applied to standard models.

© by KTM Sportmotorcycle GmbH, Mattighofen AUSTRIA; All rights reserved; Reprint, also in extracts, with written allowance of KTM Sportmotorcycle GmbH, Mattighofen only.

CONTENT

Electric motor Mini E

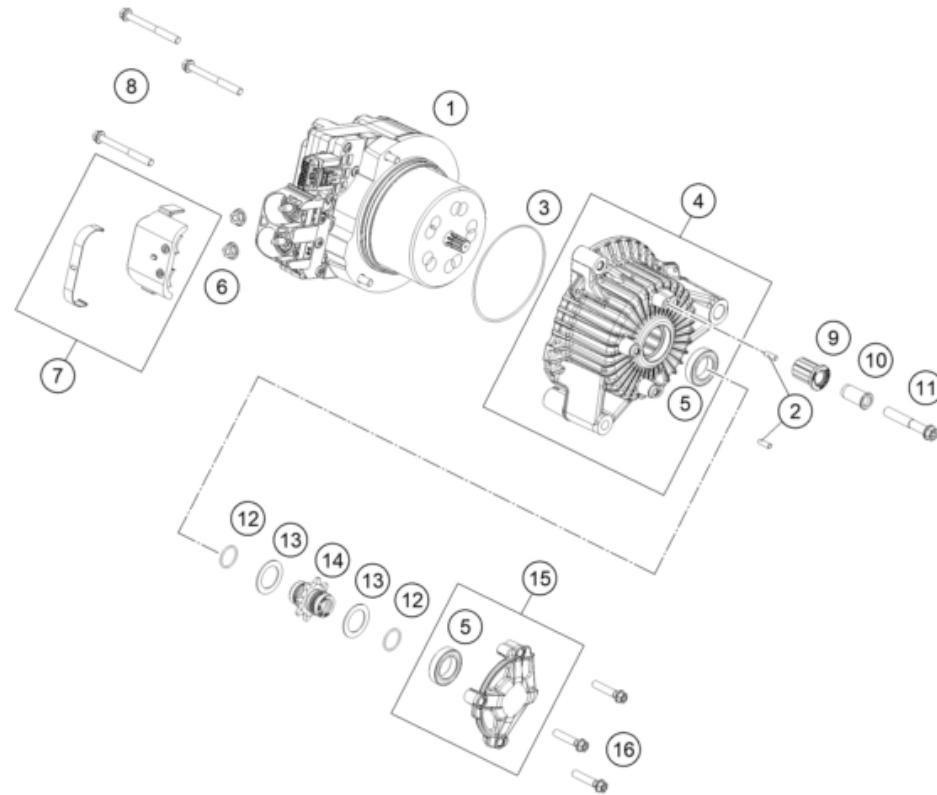
ENGINE CASE



2

ENGINE CASE

Electric motor Mini E



POS	PARTNUMBER	PARTNAME	PIECE
1	45445050100	Electric motor Mini E	1
2	0402041180	NEEDLE BEARING NRB 4X11,8	2
3	07708902701	O-ring 78 x 2 Viton black	1
4	45445003133	Housing compl.	1
5	0625068040	Grooved ball bearing 61804-2RS	2
6	06923060007	Hex.nut w.flange DIN6923-M6-10	2
7	45445050010	Protection cap, engine connections	1
8	0025060606	HH collar screw M6x60 TX30	3
9	61005013000	RUBBER SILENCER SUPPORT 05	1
10	61005014000	SLEEVE SILENCER SUPPORT 05	1
11	0025080506	HH collar screw M8x50 TX40	1
12	0770017015	O-RING 17X1,5 NB75	2
13	45445021000	Stop disc	2
14	45445018018	Pinion shaft assy	1
15	45445040233	Adjustment bush bridge compl.	1
16	0025060306	HH collar screw M6x30 TX30	3

214543010

54659

* NEW PART

X ON DEMAND

KTM.COM



45445050100EN

KTM Sportmotorcycle GmbH
5230 Mattighofen, Austria
www.ktm.com

KTM POWERPARTS

KTM POWERWEAR

KTM ORIGINAL SPARE PARTS



Art. Nr.: 45445050100EN 2. Dez. 2021