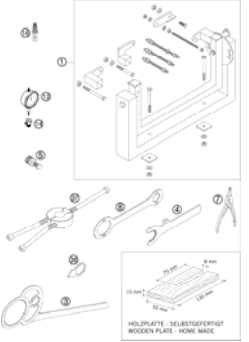
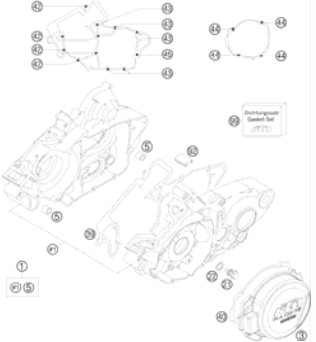

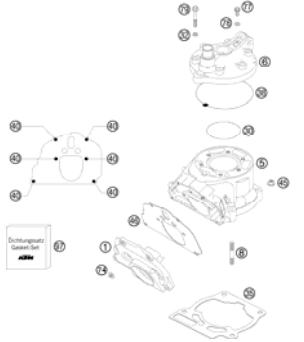
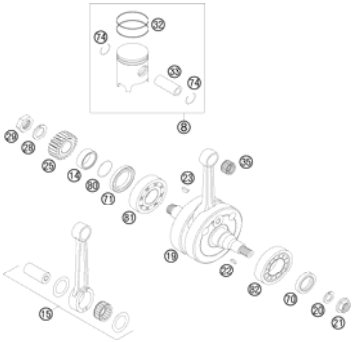
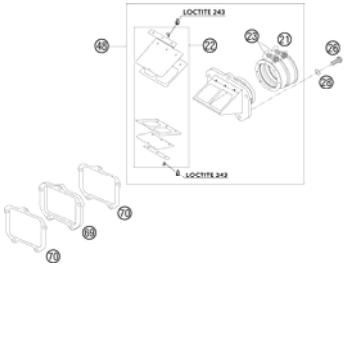

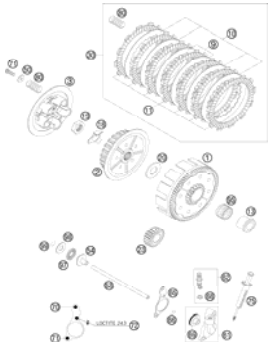

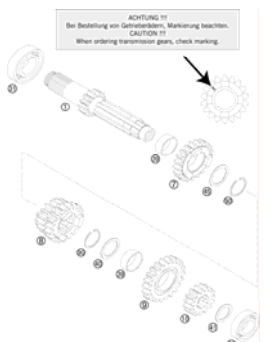
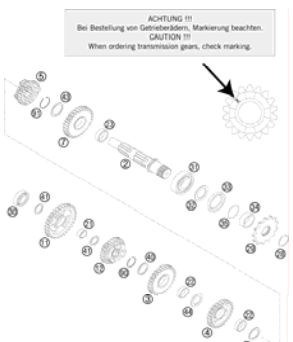



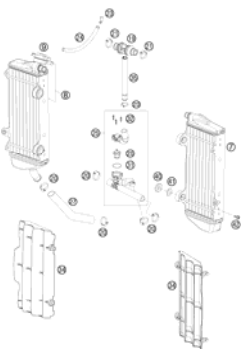

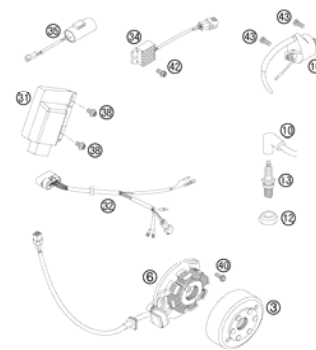
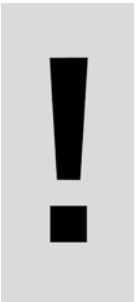
SPARE PARTS MANUAL: ENGINE

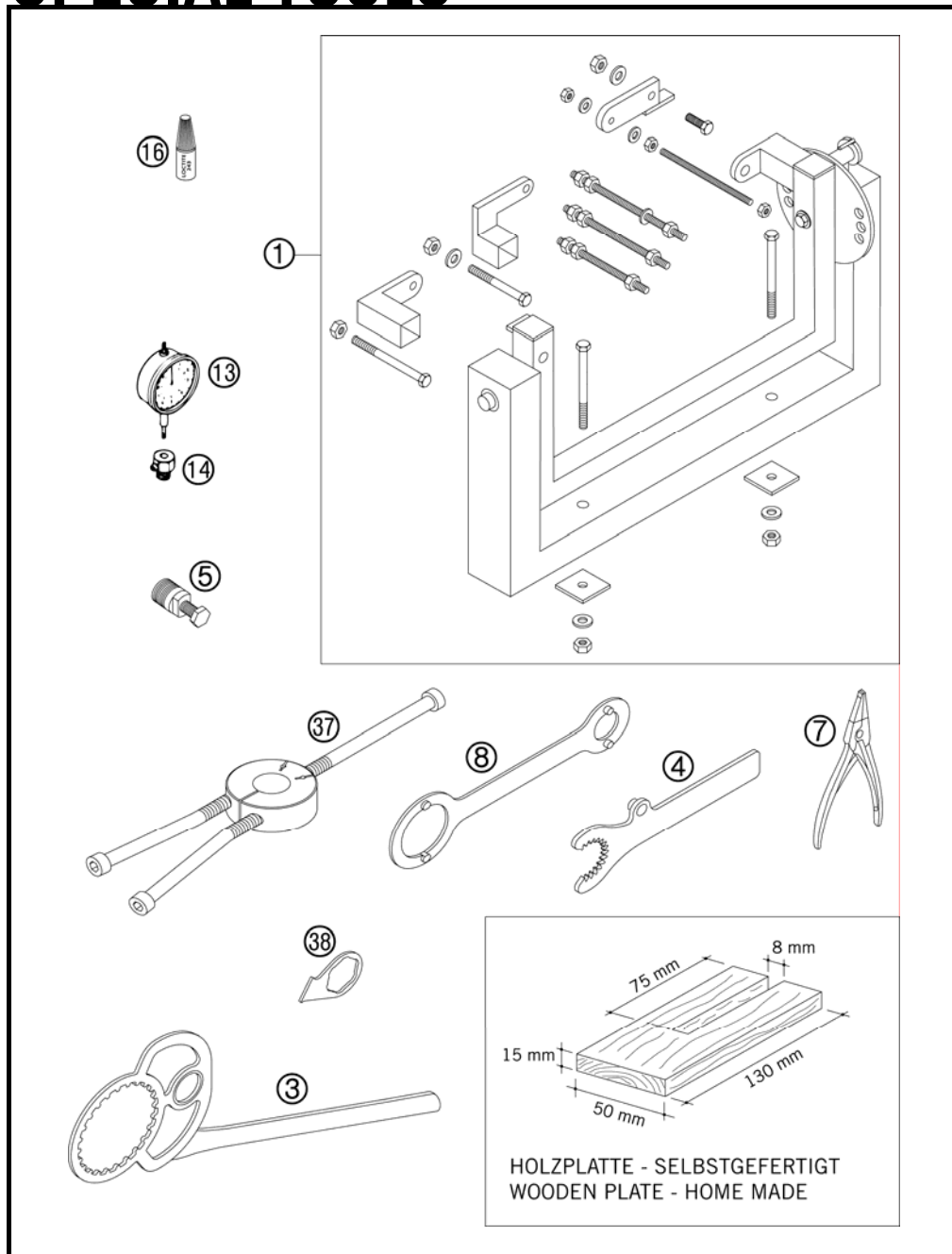
ART.NO.: 3CM082030HEN

ENGLISH



| | | | |
|--|--|---|---|
| SPECIAL TOOLS  3 | ENGINE CASE  4 | CLUTCH COVER  5 | CYLINDER, CYLINDER HEAD  6 |
| CRANKSHAFT, PISTON  7 | REED VALVE CASE  8 | CARBURETOR  9 | CLUTCH  11 |
| KICK STARTER  12 | TRANSMISSION I - MAIN SHAFT  13 | TRANSMISSION II - COUNTERSHAFT  14 | SHIFTING MECHANISM  15 |

| | | | |
|--|---|---|--|
| <p>COOLING SYSTEM</p>  <p style="text-align: right;">17</p> | <p>EXHAUST CONTROL</p>  <p style="text-align: right;">18</p> | <p>IGNITION SYSTEM</p>  <p style="text-align: right;">20</p> | |
| | | | |
| | <div style="display: flex; align-items: center;">  <p>All information contained is without obligation. KTM-Sportmotorcycle AG particularly reserves the right to modify any equipment, technical specifications, prices, colors, shapes, materials, services, service work, constructions, equipment and the like so as to adapt them to local conditions or to cancel any of the above items, all without previous announcement and without giving reasons. KTM may stop manufacturing certain models without previous notice. KTM shall not be held liable for any deviations of availability and/or ability to deliver, illustrations, descriptions, printing and/or other errors. The illustrated models partly contain extra equipment, which is not applied to standard models. © by KTM-SPORTMOTORCYCLE AG, Mattighofen AUSTRIA; All rights reserved; Reprint, also in extracts, with written allowance of KTM-SPORTMOTORCYCLE AG, Mattighofen only.</p> </div> | | |

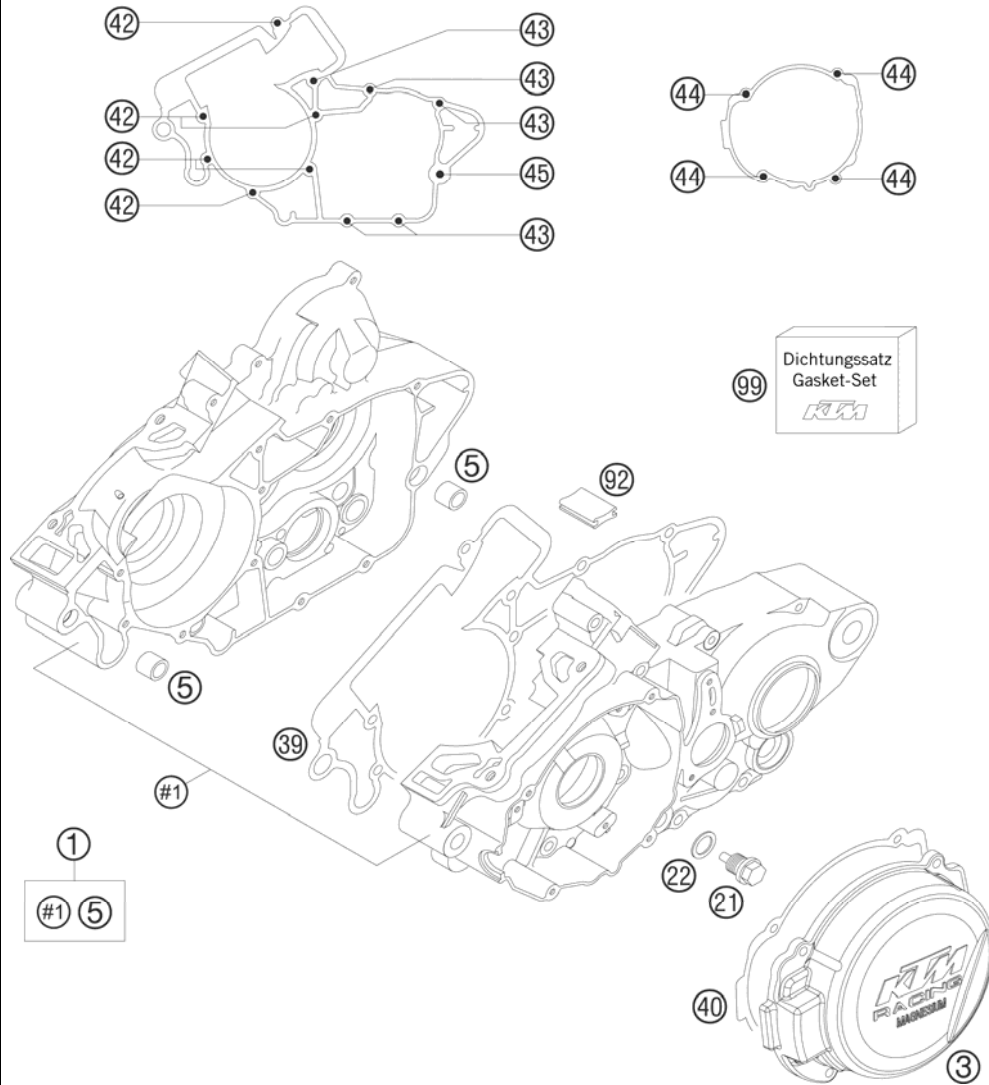


| FIG | PART NUMBER | DESCRIPTION | QTY |
|-----|-------------|--------------------------------|-----|
| 1 | 56012001044 | UNIVERSAL MOUNTING RACK CPL. | 1 |
| 3 | 50329003000 | HOLD. PLATE CLUTCH 125/200 '98 | 1 |
| 4 | 50329004000 | HOLDER FOR PRIMARY GEAR '98 | 1 |
| 5 | 54629009044 | MAGNETIC PULLER M 27X1 KOKUSAN | 1 |
| 7 | 51012011000 | SPECIAL CIRCLIP PLIER | 1 |
| 8 | 54629012100 | HOLD. SPANNER ROTOR 2K-1/2/3/4 | 1 |
| 13 | 50112013000 | DIAL GAUGE 0-10MM | 1 |
| 14 | 50112030000 | DIAL GAUGE SUPPORT | 1 |
| 16 | 6899785 | LOCTITE 243 BLUE 6CCM | 1 |
| 37 | 58429037037 | MOUNTING TOOL INNER RING NJ206 | 1 |
| 38 | 50329038000 | BRACKET FOR LOCATING DRUM '98 | 1 |

05503290 / C085232911

* NEW PART

X AS REQUIRED



| FIG | PART NUMBER | DESCRIPTION | QTY |
|-----|---------------|--------------------------------|-----|
| 1* | 51530000044 | ENGINE CASE CPL M.TRAN.BEAR 07 | 1 |
| 3 | 5033000220098 | IGNIT.COVER 125/200 MAG. 2001 | 1 |
| 5 | 54630027000 | DOWEL BUSHING 13,8X11X12 | 2 |
| 21 | 58030021000 | OILDRAIN PLUG W.MAG. M 12X1,5 | 1 |
| 22 | 58038022000 | CU-SEAL RING DIN7603-12X18X1,5 | 1 |
| 39 | 50330039000 | ENGINE CASE GASKET 0,5MM '98 | 1 |
| 40 | 50330040100 | IGNITION COVER GASKET 2001 | 1 |
| 42 | 0015060503 | HH COLLAR SCREW M 6X50 WS=8 | 6 |
| 43 | 0015060553 | HH COLLAR SCREW M 6X55 WS=8 | 5 |
| 44 | 0014050163 | HH COLLAR SCREW M 5X16 WS=6 | 4 |
| 45 | 0015060603 | HH COLLAR SCREW M 6X60 WS=8 | 1 |
| 92 | 50330092000 | OIL GUARD GROMMET 25X31 '98 | 1 |
| 99 | 50330099200 | GASKET KIT 125 07 | 1 |

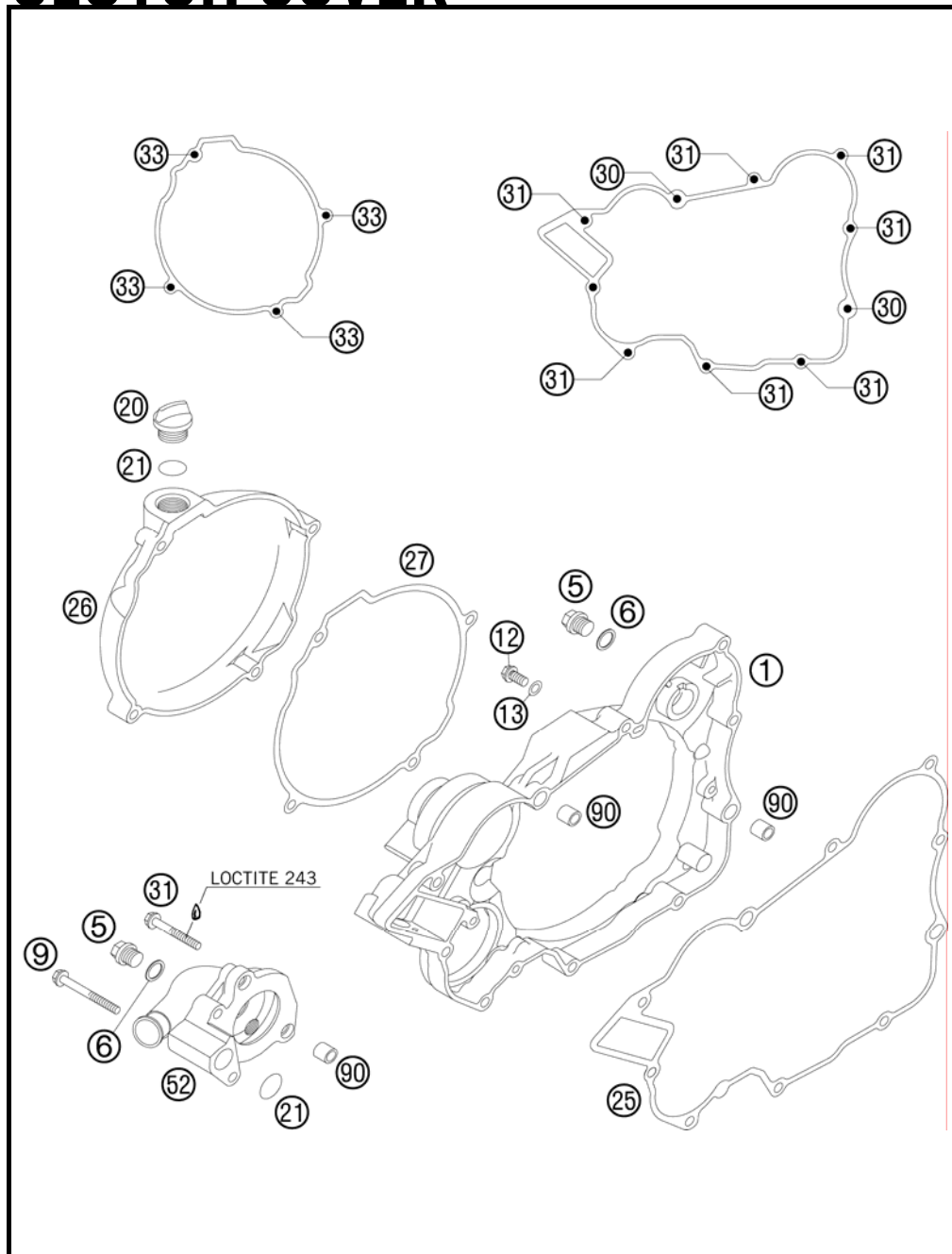
085033010 / C085033010

* NEW PART

X AS REQUIRED

CLUTCH COVER

200 EXC 2008



| FIG | PART NUMBER | DESCRIPTION | QTY |
|-----|---------------|--------------------------------|-----|
| 1 | 5033000114498 | CLUTCH COVER CPL.125/200 02 | 1 |
| 5 | 0910100003 | PLUG DIN0910-M 10X1 | 2 |
| 6 | 0603100141 | COPPER GASKET DIN7603-10X14X1 | 2 |
| 9 | 0015060503 | HH COLLAR SCREW M 6X50 WS=8 | 2 |
| 12 | 0015060123 | HH COLLAR SCREW M 6X12 WS=8 | 1 |
| 13 | 0603061001 | CU-SEAL RING DIN7603-6X10X1 | 1 |
| 20 | 58030020000 | PLUG M 24X3 | 1 |
| 21 | 0770160030 | O-RING 16,00X3,00 NBR 70 | 2 |
| 25 | 50330025000 | CLUTCH COVER GASKET 0,5MM | 1 |
| 26 | 5033002600098 | CLUTCH OUTS.COVER 125/200 2001 | 1 |
| 27 | 50330027000 | CLUTCH OUTS.COVER GASKET 1MM | 1 |
| 30 | 0015060403 | HH COLLAR SCREW M 6X40 WS=8 | 2 |
| 31 | 0015060353 | HH COLLAR SCREW M 6X35 WS=8 | 9 |
| 33 | 0015060253 | HH COLLAR SCREW M 6X25 WS=8 | 4 |
| 52 | 50335052000 | WATER PUMP COVER 125/200 '98 | 1 |
| 90 | 49030090000 | DOWEL 9,8 X 7 X 10 | 4 |

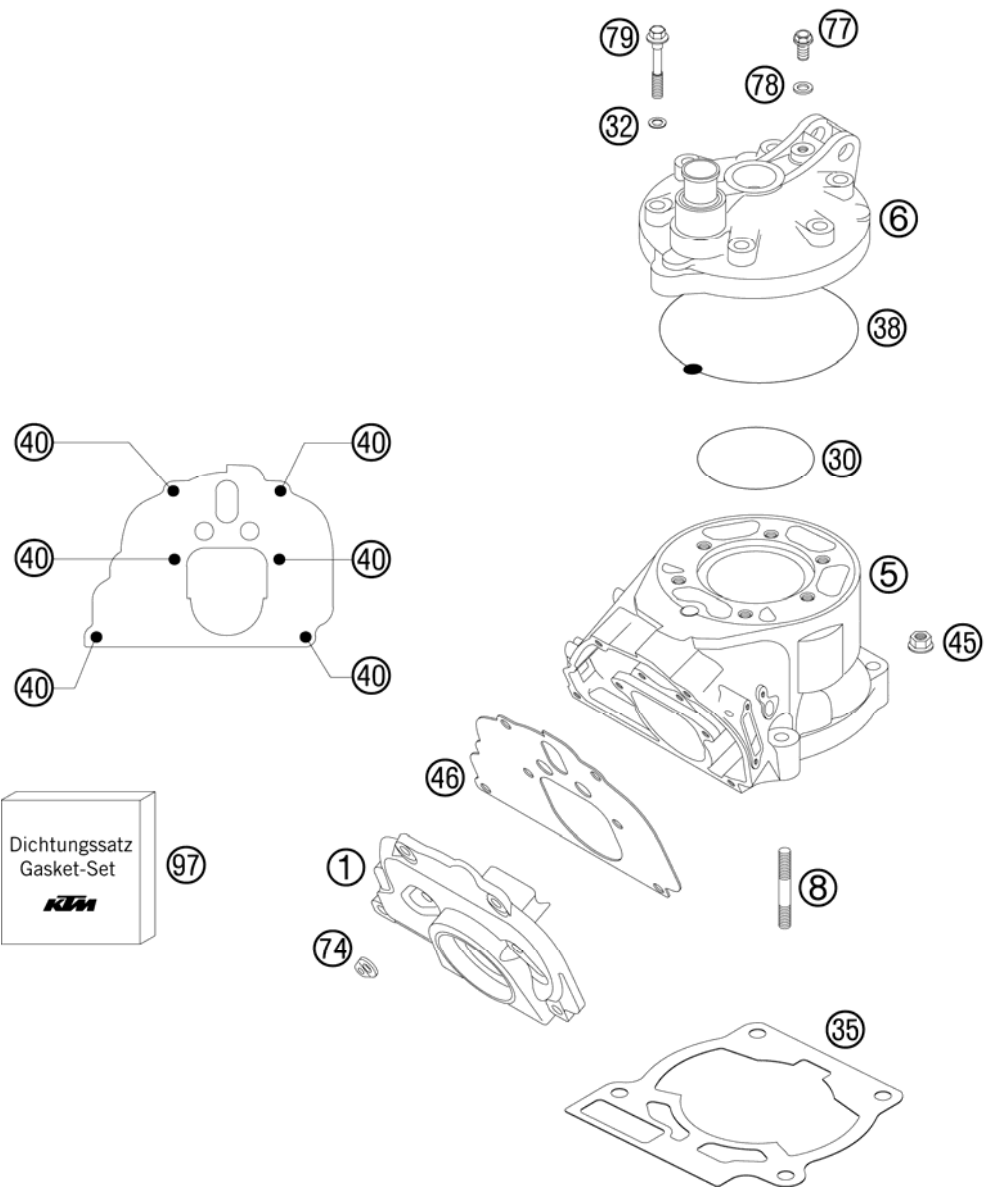
085033020 / C085033020

* NEW PART

X AS REQUIRED

CYLINDER, CYLINDER HEAD

200 EXC 2008



| FIG | PART NUMBER | DESCRIPTION | QTY |
|-----|-------------|--------------------------------|-----|
| 1 | 52337001200 | INTERMEDIATE FLANGE 200 2000 | 1 |
| 5 | 52330005300 | CYLINDER 200 2003 | 1 |
| 6 | 52330006200 | CYLINDER HEAD 200 2006 | 1 |
| 8 | 0835080355 | STUD DIN0835-M 8X35 10.9 | 4 |
| 30 | 0770720021 | O-RING 72,00X2,00 VITON | 1 |
| 32 | 50230032010 | CU-SEAL RING 7,3 X 12 X 0,5 | 6 |
| 35 | 50330035020 | CYLINDER BASE GASKET 0,20MM | x |
| 35 | 50330035025 | CYLINDER BASE GASKET 0,25MM | x |
| 35 | 50330035040 | CYLINDER BASE GASKET 0,40MM | x |
| 35 | 50330035050 | CYLINDER BASE GASKET 0,50MM | x |
| 35 | 50330035075 | CYLINDER BASE GASKET 0,75MM | x |
| 38 | 52330137000 | CYL.HEAD SEAL RING 200 2003 | 1 |
| 40 | 0014050203 | HH COLLAR SCREW M 5X20 WS=6 | 6 |
| 45 | 50330045000 | HH COLLAR NUT M 8 WS=12 | 4 |
| 46 | 52337046100 | INTERMED.GASKET 1,1MM 200 2000 | 1 |
| 74 | 51005074000 | RETAINING PLATE | 2 |
| 77 | 0015060103 | HH COLLAR SCREW M 6X10 WS=8 | 1 |
| 78 | 0603061001 | CU-SEAL RING DIN7603-6X10X1 | 1 |
| 79 | 50030079000 | CYL. HEAD BOLT M 7X40 WS=10 | 6 |
| 97 | 50330097000 | GASKET SET CYL. 125/200 98-06 | 1 |

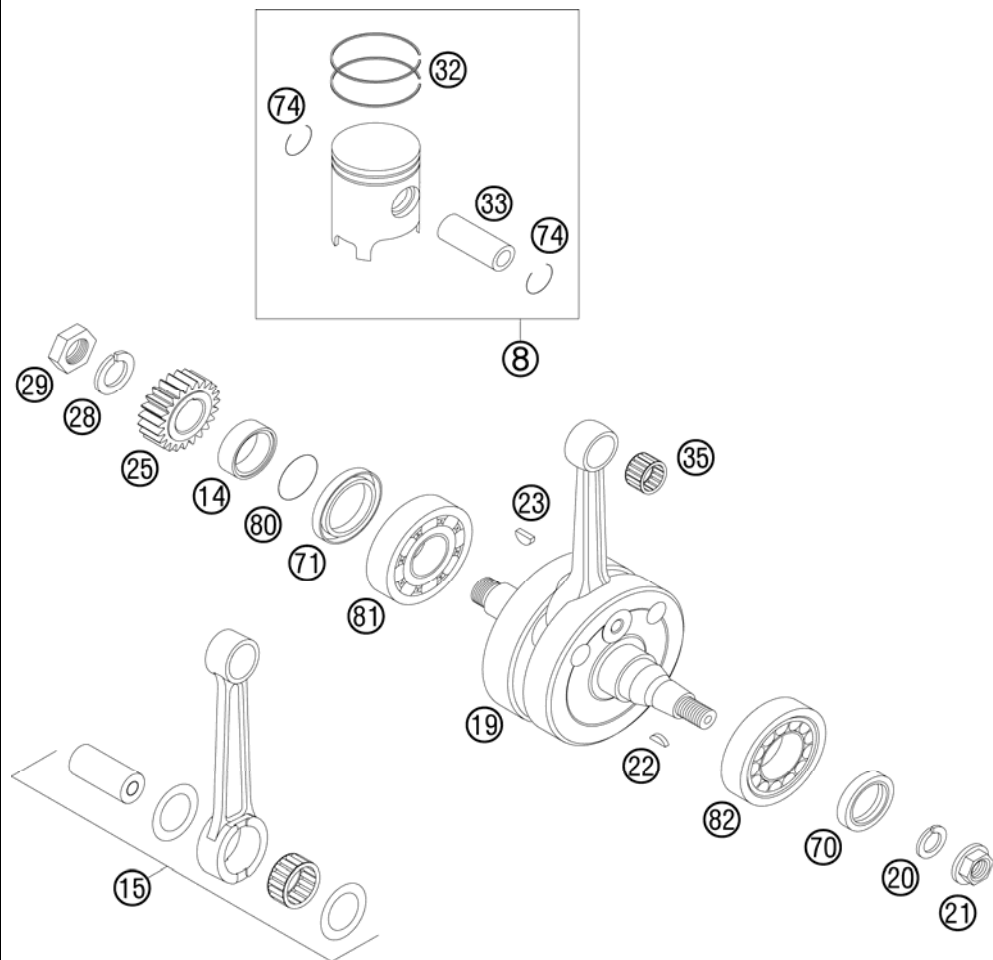
085233050 / C085033051

* NEW PART

X AS REQUIRED

CRANKSHAFT, PISTON

200 EXC 2008



| FIG | PART NUMBER | DESCRIPTION | QTY |
|-----|----------------|--------------------------------|-----|
| 8 | 52330007300 I | PISTON I CPL. 64MM 200 2004 | 1 |
| 8 | 52330007300 II | PISTON II CPL. 64MM 200 2004 | 1 |
| 14 | 54633014100 | SPACER BUSHING 12MM | 1 |
| 15 | 52330015100 | CON.ROD REPAIR KIT 200'07 | 1 |
| 19 | 52330018200 | CRANKSHAFT CPL. 200 EXC 2007 | 1 |
| 20 | 50230029012 | LOCKING RING VSK 12 | 1 |
| 21 | 49030021000 | COLLAR NUT M12X1 R/S | 1 |
| 22 | 0888030050 | WOODRUFF KEY DIN6888-3X5X13 | 1 |
| 23 | 6946005 | WOODRUFF KEY 5X6,5 HARDED | 1 |
| 25* | 50332023123 | PRIMARY PINION 23-T 125/200 06 | 1 |
| 28 | 50230029016 | LOCKING RING VSK 16 | 1 |
| 29 | 50330029000 | HEXAGON NUT M 16 X 1,5 - L/S | 1 |
| 32 | 52330032100 | SQUARE RING 64X1 200 2002 | x |
| 33 | 52330033100 | PISTON PIN 11X16X46 200 02 | 1 |
| 35 | 52330034000 | NEEDLE BEARING KV16X20X20 FN | 1 |
| 70 | 0760253570 | SHAFT SEAL RING 25X35X7 BTSL | 1 |
| 71 | 0760324564 | SHAFT SEAL RING 32X45X6,5 BT | 1 |
| 74 | 52330074100 | WIRE LOCK RING 16X1,2 | 2 |
| 80 | 0770250020 | O-RING 25,00X2,00 NBR 70 | 1 |
| 81 | 0625063055 | BALL BEARING 6305 JR2 CS36 | 1 |
| 82 | 50330082000 | CYL.ROLLER BEAR.NJ206 ET2XCS46 | 1 |

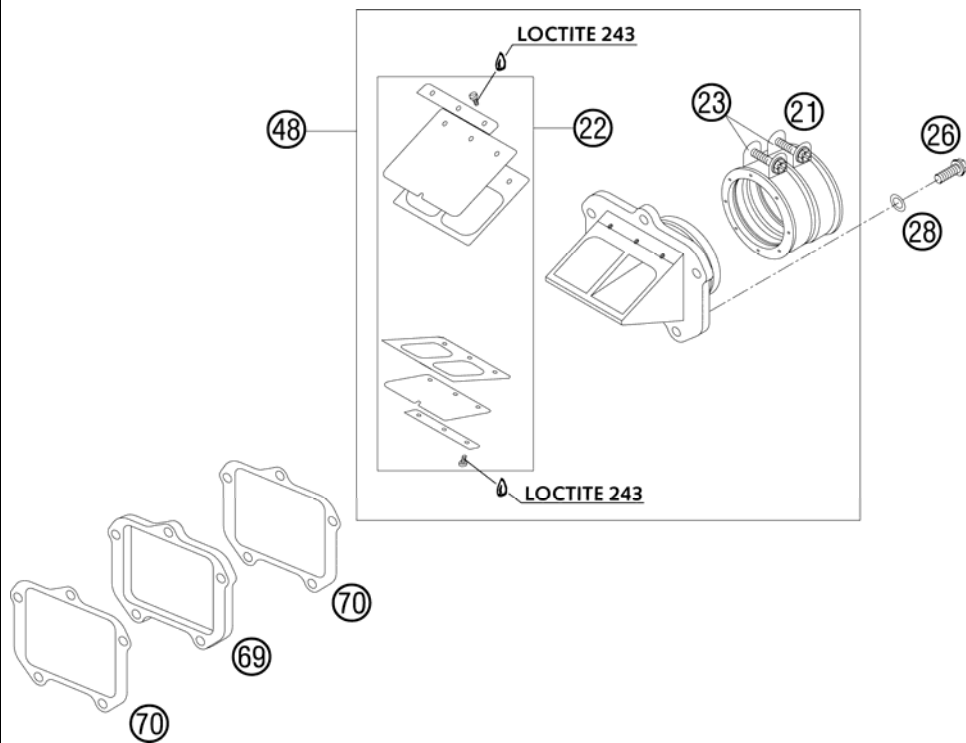
085233060 / C085033062

* NEW PART

X AS REQUIRED

REED VALVE CASE

200 EXC 2008



| FIG | PART NUMBER | DESCRIPTION | QTY |
|-----|-------------|--------------------------------|-----|
| 21 | 54736044000 | RUBBER BOOT CPL. BOYESEN 2002 | 1 |
| 22 | 54730052000 | REED VALVE CPL. BOYESEN 02 | 1 |
| 23 | 54830061000 | CLAMP 54/09 MIXED | 2 |
| 26 | 0015060253 | HH COLLAR SCREW M 6X25 WS=8 | 5 |
| 28 | 0137060003 | SPRING WASHER DIN0137-B 6 | 5 |
| 48* | 54730051044 | REED VALVE ASSY CPL. 2000 | 1 |
| 69 | 54630098000 | REED VALVE PLATE 6MM | 1 |
| 70 | 50330098050 | GASKET REED V.PLATE V-FORCE 04 | 2 |

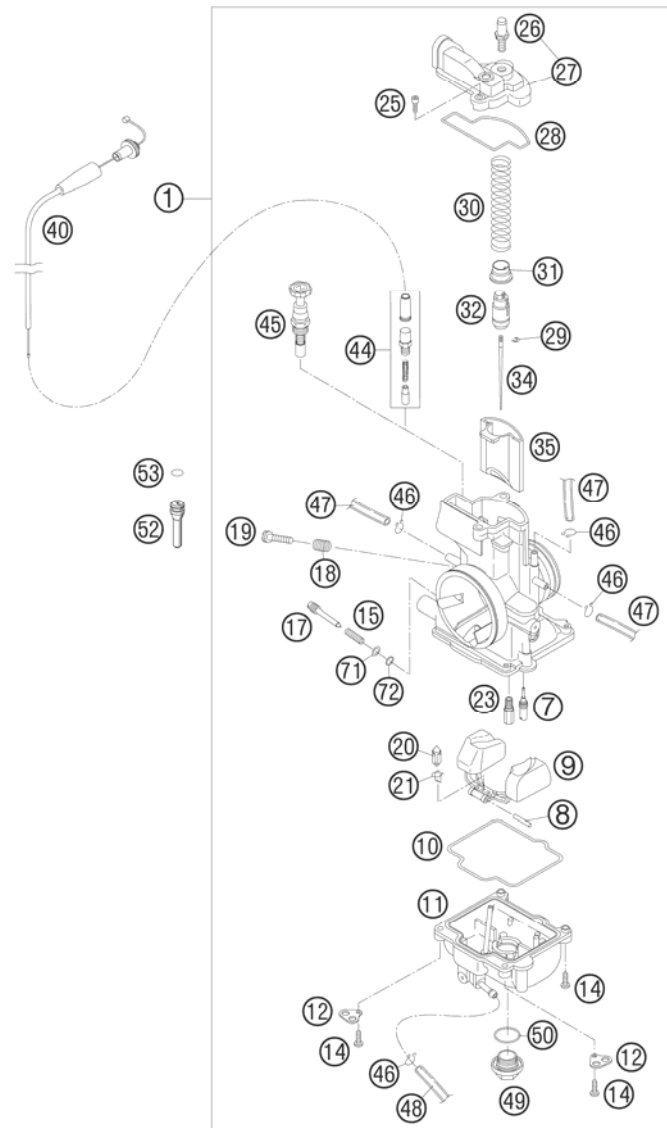
085233070 / C085033071

* NEW PART

X AS REQUIRED

ACHTUNG !!!
Vor dem Einbau des Vergasers, Bedüsung kontrollieren.

CAUTION !!!
Before mounting the carburetor, check the jetting.



| FIG | PART NUMBER | DESCRIPTION | QTY |
|-----|-------------|--|-----|
| 1* | 52331001644 | CARBURETOR KEIHIN PWK36S AG 07 ONLY FOR AUS | x |
| 1* | 52331001744 | CARBURETOR KEIHIN PWK36S AG 08 ONLY FOR EU | x |
| 7 | 54531607035 | IDLE JET 35 KEIHIN | x |
| 7 | 54531607038 | IDLE JET 38 KEIHIN | x |
| 7 | 54531607040 | IDLE JET 40 KEIHIN | x |
| 7 | 54531607042 | IDLE JET 42 KEIHIN | x |
| 7 | 54531607045 | IDLE JET 45 KEIHIN | x |
| 7 | 54531607048 | IDLE JET 48 KEIHIN | x |
| 7 | 54531607050 | IDLE JET 50 KEIHIN | x |
| 8 | 57331008000 | ARM PIN FLOAT | 1 |
| 9 | 57331009000 | FLOAT CPL. | 1 |
| 10 | 54831010000 | GASKET FLOAT CHAMBER | 1 |
| 11 | 54831011000 | FLOAT CHAMBER PWK38-S AG | 1 |
| 12 | 54531612100 | RETAINING PLATE FOR BLEEDER | 2 |
| 14 | 0016040163 | HH COLLAR SCREW M 4X16 WS=6 | 4 |
| 15 | 54531615000 | SPRING FOR ADJUSTMENT SCREW | 1 |
| 17 | 54531617000 | ADJUSTMENT SCREW | 1 |
| 18 | 54631118000 | SPRING | 1 |
| 19 | 54631219100 | ADJUSTMENT SCREW M 5 | 1 |
| 20 | 54631220000 | FLOAT NEEDLE | 1 |
| 21 | 54531621000 | CLAMP | 1 |
| 23 | 54531623150 | MAIN JET 150 KEIHIN | x |
| 23 | 54531623152 | MAIN JET 152 KEIHIN | x |
| 23 | 54531623155 | MAIN JET 155 KEIHIN | x |
| 23 | 54531623158 | MAIN JET 158 KEIHIN | x |
| 23 | 54531623160 | MAIN JET 160 KEIHIN | x |
| 23 | 54531623162 | MAIN JET 162 KEIHIN | x |
| 23 | 54531623165 | MAIN JET 165 KEIHIN | x |
| 23 | 54531623168 | MAIN JET 168 KEIHIN | x |
| 23 | 54531623170 | MAIN JET 170 KEIHIN | x |
| 23 | 54531623172 | MAIN JET 172 KEIHIN | x |
| 23 | 54531623175 | MAIN JET 175 KEIHIN | x |
| 25 | 54831025000 | SPECIAL-AH-SCREW M 4X12 | 2 |
| 26 | 54831029000 | THROTTLE CALBE HOLDER M6X0,75 | 1 |

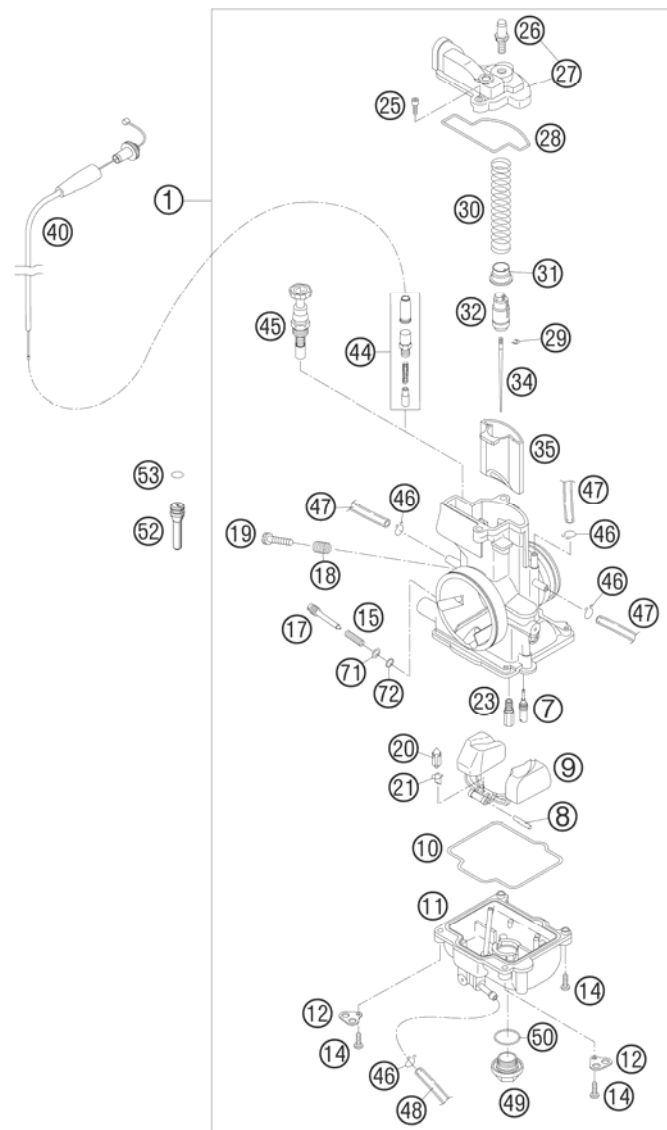
085033111 / C085033111

* NEW PART

X AS REQUIRED

ACHTUNG !!!
Vor dem Einbau des Vergasers, Bedüsung kontrollieren.

CAUTION !!!
Before mounting the carburetor, check the jetting.

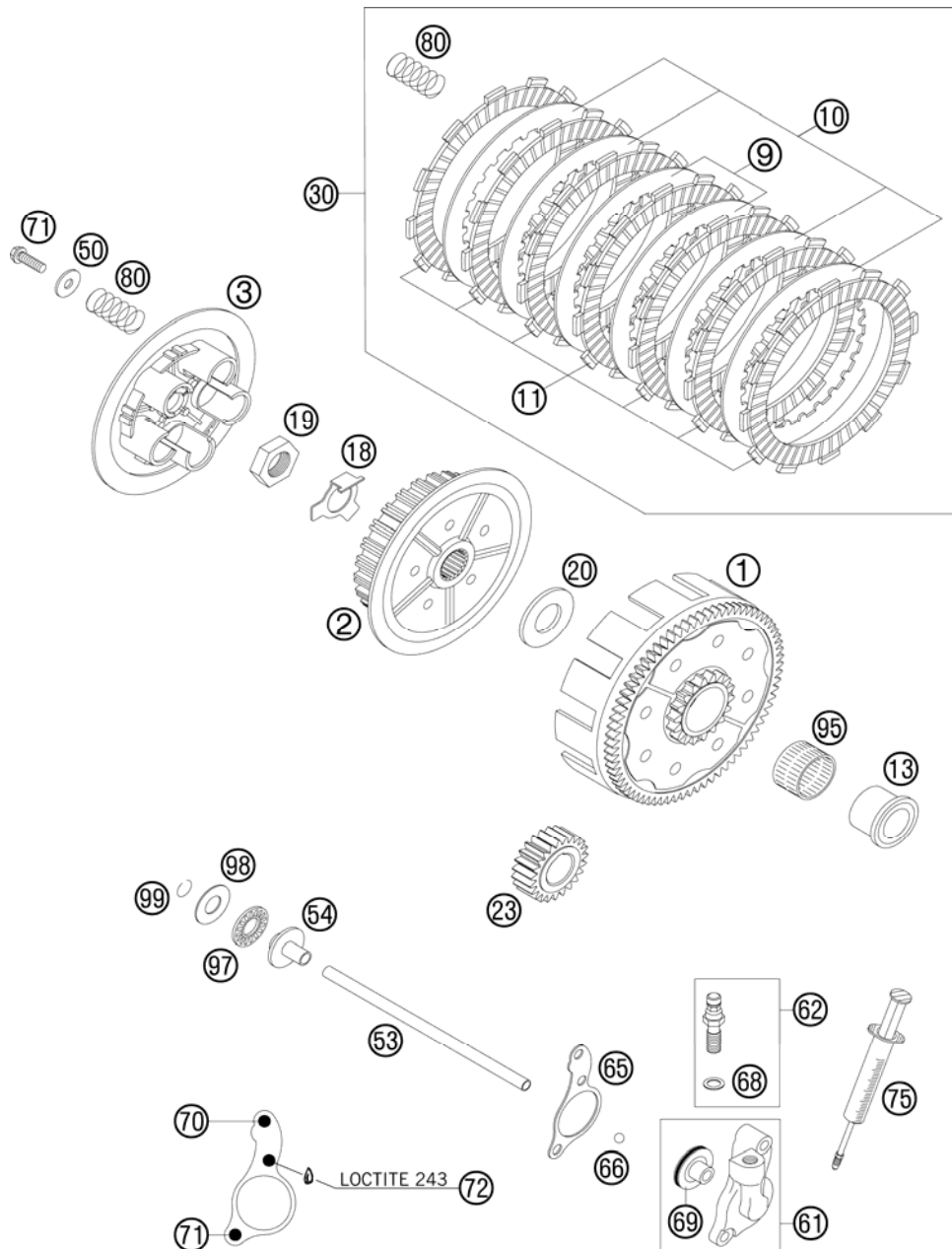


| FIG | PART NUMBER | DESCRIPTION | QTY |
|-----|-------------|---|-----|
| 27 | 54831127000 | CARBURETOR COVER PWK36-S AG | 1 |
| 28 | 54831028000 | GASKET FOR CARBURETOR COVER | 1 |
| 29 | 54531629000 | CLIP FOR JET NEEDLE | 1 |
| 30 | 54831030000 | SLIDING SPRING | 1 |
| 31 | 54631231000 | SPRING CAP | 1 |
| 32 | 54631232000 | NIPPLE | 1 |
| 34 | 54531634175 | JET NEEDLE R 1475 J KEIHIN | x |
| 34 | 54531634272 | JET NEEDLE R 1472 N KEIHIN | x |
| 34 | 54531636004 | JET NEEDLE NOZ D KEIHIN | x |
| 34 | 54531636005 | JET NEEDLE NOZ E KEIHIN | x |
| 34 | 54531636006 | JET NEEDLE NOZ F KEIHIN | x |
| 34 | 54531636007 | JET NEEDLE NOZ G KEIHIN | x |
| 34 | 54531636008 | JET NEEDLE NOZ H KEIHIN | x |
| 34 | 54531636009 | JET NEEDLE NOZ I KEIHIN | x |
| 34 | 54731034200 | JET NEEDLE KEIHIN R1468G 03 | x |
| 34 | 54731034300 | JET NEEDLE KEIHIN R1469G 03 | x |
| 35 | 54631035000 | THROTTLE VALVE 7 FOR 38 PJ '00 | 1 |
| 40* | 54831078000 | CABLE F. COLD START ACT. 08 ONLY FOR EU | 1 |
| 44* | 58502096044 | CONNECT. COLD START CABLE CPL. ONLY FOR EU | 1 |
| 45 | 54631245000 | STARTER PISTON CPL. | x |
| 46 | 54531696000 | CLAMP 6 MM | 5 |
| 47 | 31007007101 | PVC-HOSE 4X6MM | 2 |
| 48 | 52031137001 | PVC-HOSE 3X5MM | x |
| 49 | 54531699000 | PLUG M 18X1 | 1 |
| 50 | 0770180230 | O-RING 18,00X2,30 NBR 70 | 1 |
| 52* | 52331029000 | SLIDE STOP L=36 08 | x |
| 53 | 0770060018 | O-RING 6,00X1,78 | x |
| 71 | 54831071000 | WASHER ADJUSTING SCREW | 1 |
| 72 | 54831072000 | O-RING ADJUSTING SCREW | 1 |

085033111 / C085033111

* NEW PART

X AS REQUIRED

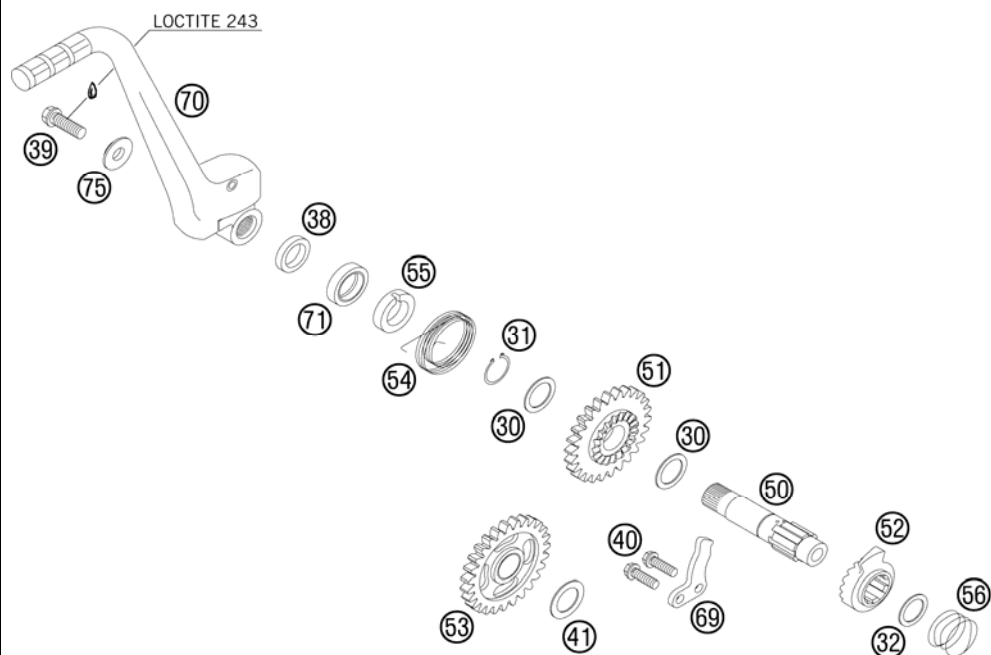


| FIG | PART NUMBER | DESCRIPTION | QTY |
|-----|-------------|--|-----|
| 1 | 50332000173 | OUTHER CLUTCH 73-T 125/200 06 WITHOUT PRIMARY PINION | 1 |
| 2 | 50332002100 | INNER CLUTCH HUB 125/200 06 | 1 |
| 3 | 50332003100 | PRESSURE PLATE 125/200 06 | 1 |
| 9 | 50332010200 | INTERMEDI. DISC STEEL 1,5MM 06 | 2 |
| 10 | 50332010300 | INTERMEDIATE DISK ALU 1,5MM 06 | 4 |
| 11 | 50332011100 | ORGANIC DISK 3MM 06 | 7 |
| 13 | 50332013000 | INNER RING 20X26X25,9 '98 | 1 |
| 18 | 50332018000 | SHEET METAL LOCK 1,5MM '98 | 1 |
| 19 | 0936181505 | HEXAGON NUT DIN0936-M18X1,5 R. | 1 |
| 20 | 50332020000 | STOP DISK 20X39,6X3 '98 | 1 |
| 23 | 50332023123 | PRIMARY PINION 23-T 125/200 06 | 1 |
| 30* | 50332011110 | CLUTCH KIT 125 '06 | 1 |
| 50 | 52332006100 | STEPPED WASHER 03 | 5 |
| 53 | 50332017300 | PUSH ROD L=178 125/200 2006 | 1 |
| 54 | 50332054051 | PRESSURE PIECE 125-380 '98 | 1 |
| 61 | 50332061044 | CYLINDER CPL. 125/200'98 | 1 |
| 62 | 50332062000 | HOLLOW SCREW CPL. M 10X1 '98 | 1 |
| 65 | 50332065051 | CLUTCH RELEASE GASKET 0,3MM | x |
| 65 | 50332065052 | CLUTCH RELEASE GASKET 0,5MM | x |
| 65 | 50332065053 | CLUTCH RELEASE GASKET 0,75MM | x |
| 66 | 0401070003 | BALL DIN5401-7 | 1 |
| 68 | 42013226000 | CU-SEAL RING DIN7603-10X16X1 | 1 |
| 69 | 50332066000 | PISTON W. O-RING 125/200 2000 | 1 |
| 70 | 0015060403 | HH COLLAR SCREW M 6X40 WS=8 | 1 |
| 71 | 0015060203 | HH COLLAR SCREW M 6X20 WS=8 | 6 |
| 72 | 0015060253 | HH COLLAR SCREW M 6X25 WS=8 | 1 |
| 75 | 50329050000 | VENT INJEKTION HYDR. CLUTCH | 1 |
| 80 | 52332005100 | CLUTCH SPRING 200 07 | 5 |
| 95 | 56532095000 | NEEDLE BEARING K26X30X22ZW.KSE | 1 |
| 97 | 54637097200 | AXIAL NEEDLE BEARING AXK 1226 | 1 |
| 98 | 54637098200 | AXIAL WASHER AS1226 12X26X1 | 1 |
| 98 | 54637098300 | AXIAL WASHER 12,5X25,8X1,5 | x |
| 99 | 0993012000 | CIRCLIP DIN7993-RW12 | 1 |

085033211 / C085033211

* NEW PART

X AS REQUIRED



| FIG | PART NUMBER | DESCRIPTION | QTY |
|-----|-------------|--------------------------------|-----|
| 30 | 50333030000 | STOP DISK 17,2X24X1 | 2 |
| 31 | 0471170010 | CIRCLIP DIN0471-17X1 | 1 |
| 32 | 0988162210 | THRUST WASHER DIN0988-16X22X1 | 1 |
| 38 | 50333038100 | SPACER BUSHING 16X23X26X6,1 | 1 |
| 39 | 0015080203 | HH COLLAR SCREW M 8X20 WS=10 | 1 |
| 40 | 0015060163 | HH COLLAR SCREW M 6X16 WS=8 | 2 |
| 41 | 50333041000 | STOP DISC 17,2X26X1 B | 1 |
| 50 | 50333050000 | KICKSTARTER SHAFT 125/200'98 | 1 |
| 51 | 50333051026 | KICKSTART.GEAR 26-T 125/200'98 | 1 |
| 52 | 50333052000 | KICKSTARTER RATCHET | 1 |
| 53 | 50333053127 | INTERMEDIATE GEAR 27-T 04 | 1 |
| 54 | 50333054000 | KICKSTARTER SPRING 2,6MM '98 | 1 |
| 55 | 50333055000 | DRIVING HUB 125/200'98 | 1 |
| 56 | 50333056000 | SPRING 1,4MM '98 | 1 |
| 69 | 50333069000 | STOP MET.SHEET 4MM 125/200'98 | 1 |
| 70 | 50333070044 | KICKSTARTER CPL. 125/200'98 | 1 |
| 71 | 0760172870 | SHAFT SEAL RING 17X28X7 B | 1 |
| 75 | 50333075000 | WASHER 8,2X22X4,5 '98 | 1 |

085033390 / C085033390

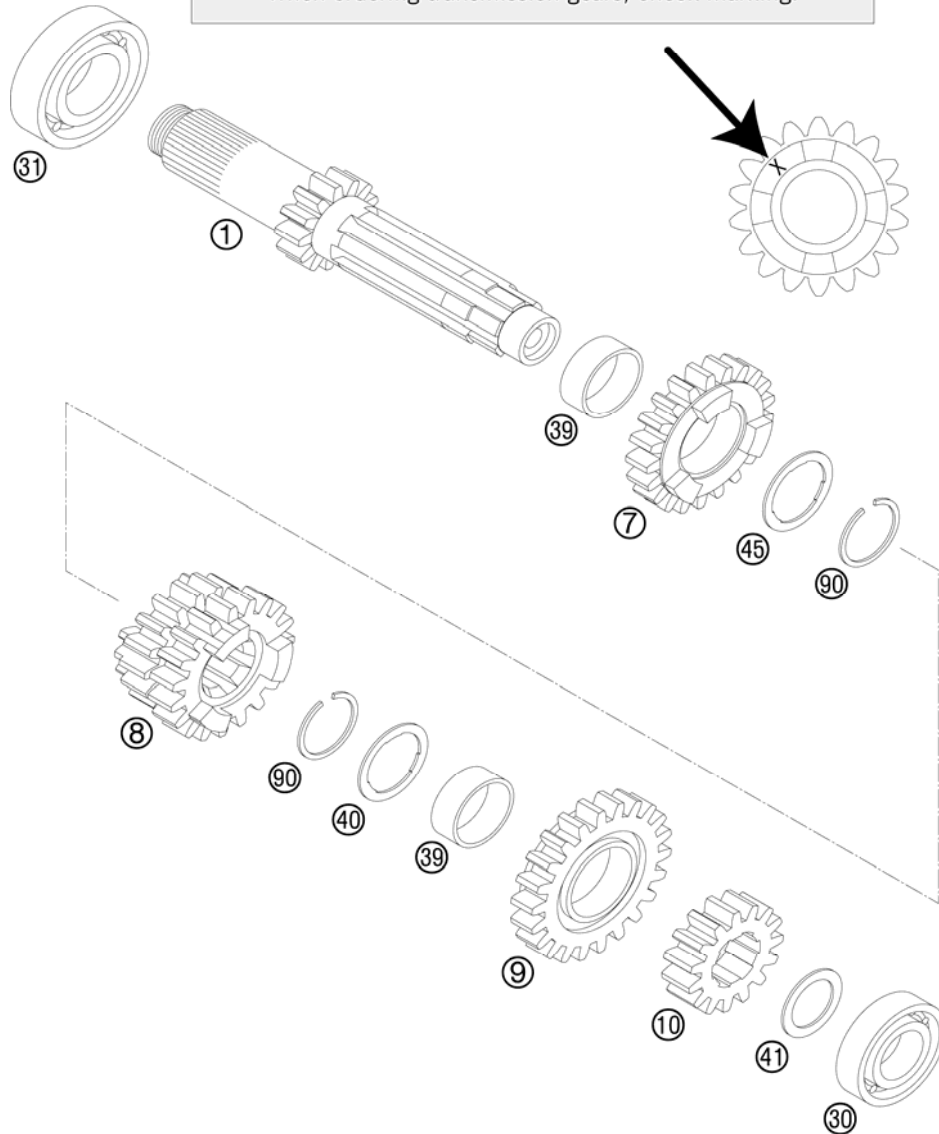
* NEW PART

X AS REQUIRED

TRANSMISSION I - MAIN SHAFT

200 EXC 2008

ACHTUNG !!!
 Bei Bestellung von Getrieberädern, Markierung beachten.
CAUTION !!!
 When ordering transmission gears, check marking.



| FIG | PART NUMBER | DESCRIPTION | QTY |
|-----|-------------|--|-----|
| 1 | 50333001144 | MAIN SHAFT CPL. 12-T '98 | 1 |
| 7 | 52333007100 | IDLER G. 5TH G.17-T "5G17H" 04 | 1 |
| 8 | 50333008100 | SLIDING GEAR 3/4.G. 17/19-T 04 "3S17H"- "4S19H" | 1 |
| 9 | 50333009400 | IDLER G.6TH G. 22-T "6G22H" 04 | 1 |
| 10 | 50333010100 | SOLID GEAR 2ND G.15-T"2S15" 03 | 1 |
| 30 | 0625160031 | GROOVED BALL B. 16003 C4 J1 | 1 |
| 31 | 0625060042 | BALL BEARING 6004 TN9 C4 | 1 |
| 39 | 50333020000 | IDLER GEAR BUSH. 22X25X11,1 A | 2 |
| 40 | 50333040000 | STOP DISC 22,2X27,8X1 A | 1 |
| 41 | 50333041000 | STOP DISC 17,2X26X1 B | 1 |
| 45 | 50333045000 | STOP DISK 22,2X27,8X1 | 1 |
| 90 | 50133090000 | LOCK RING 22X1,2 | 2 |

085233330 / C085233331

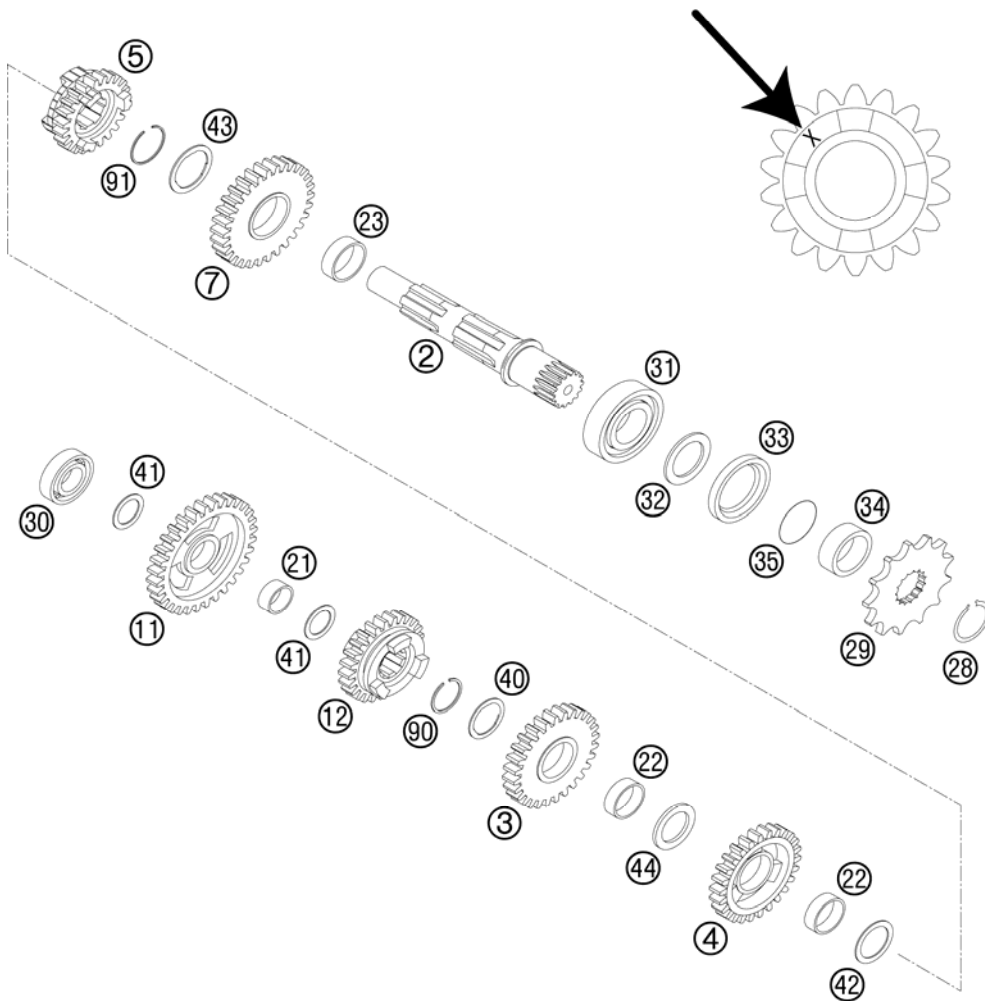
* NEW PART

X AS REQUIRED

TRANSMISSION II - COUNTERSHAFT

200 EXC 2008

ACHTUNG !!!
Bei Bestellung von Getrieberädern, Markierung beachten.
CAUTION !!!
When ordering transmission gears, check marking.



| FIG | PART NUMBER | DESCRIPTION | QTY |
|-----|-------------|---------------------------------|-----|
| 2 | 50333002000 | COUNTER SHAFT 125/200 '98 | 1 |
| 3 | 50333003100 | IDLE G.3RD G.28-T "3S28H" 04 | 1 |
| 4 | 50333004000 | IDLE G.4TH G.26-T "4S26" '98 | 1 |
| 5 | 50333005500 | SLIDING GEAR 6TH G. "6E20H" 04 | 1 |
| 7 | 50333006100 | IDLER G. 2ND G. 31-T "2G31" '98 | 1 |
| 11 | 50333011300 | IDLER G. 1ST G. 33-T "1G33" '98 | 1 |
| 12 | 52333012100 | SLIDING G.5TH G.19-T"5G19H" 04 | 1 |
| 21 | 50333021000 | IDLER GEAR BUSHING 17X20X9,7 B | 1 |
| 22 | 50333022000 | IDLER GEAR BUSHING 22X25X8,1 C | 2 |
| 23 | 50333023000 | IDLER GEAR BUSHING 25X28X9,7 D | 1 |
| 28 | 52033096000 | LOCK RING DINO471-25X1,64SD | 1 |
| 29 | 50033029013 | SPROCKET 13-T | x |
| 29 | 50033029014 | SPROCKET 14-T | x |
| 29 | 50033029015 | SPROCKET 15-T | x |
| 30 | 0625060031 | BALL BEARING 6003 TN9 C4 | 1 |
| 31 | 0625062058 | BALL BEARING 6205 TN9 C3 | 1 |
| 32 | 56033020000 | STOP RING | 1 |
| 33 | 0760324571 | SHAFT SEAL RING 32X45X7 BSLNBR | 1 |
| 34 | 54633014100 | SPACER BUSHING 12MM | 1 |
| 35 | 0770230020 | O-RING 23,00X2,00 NBR70 | 1 |
| 40 | 50333040000 | STOP DISC 22,2X27,8X1 A | 1 |
| 41 | 50333041000 | STOP DISC 17,2X26X1 B | 2 |
| 42 | 50333042000 | STOP DISK 22,2X28X1 C | 1 |
| 43 | 50333043000 | STOP DISC 25,2X32X1 | 1 |
| 44 | 50333044000 | STOP DISC 22,2X30X2,5 | 1 |
| 90 | 50133090000 | LOCK RING 22X1,2 | 1 |
| 91 | 52033090100 | LOCK RING 25X1,2 | 1 |

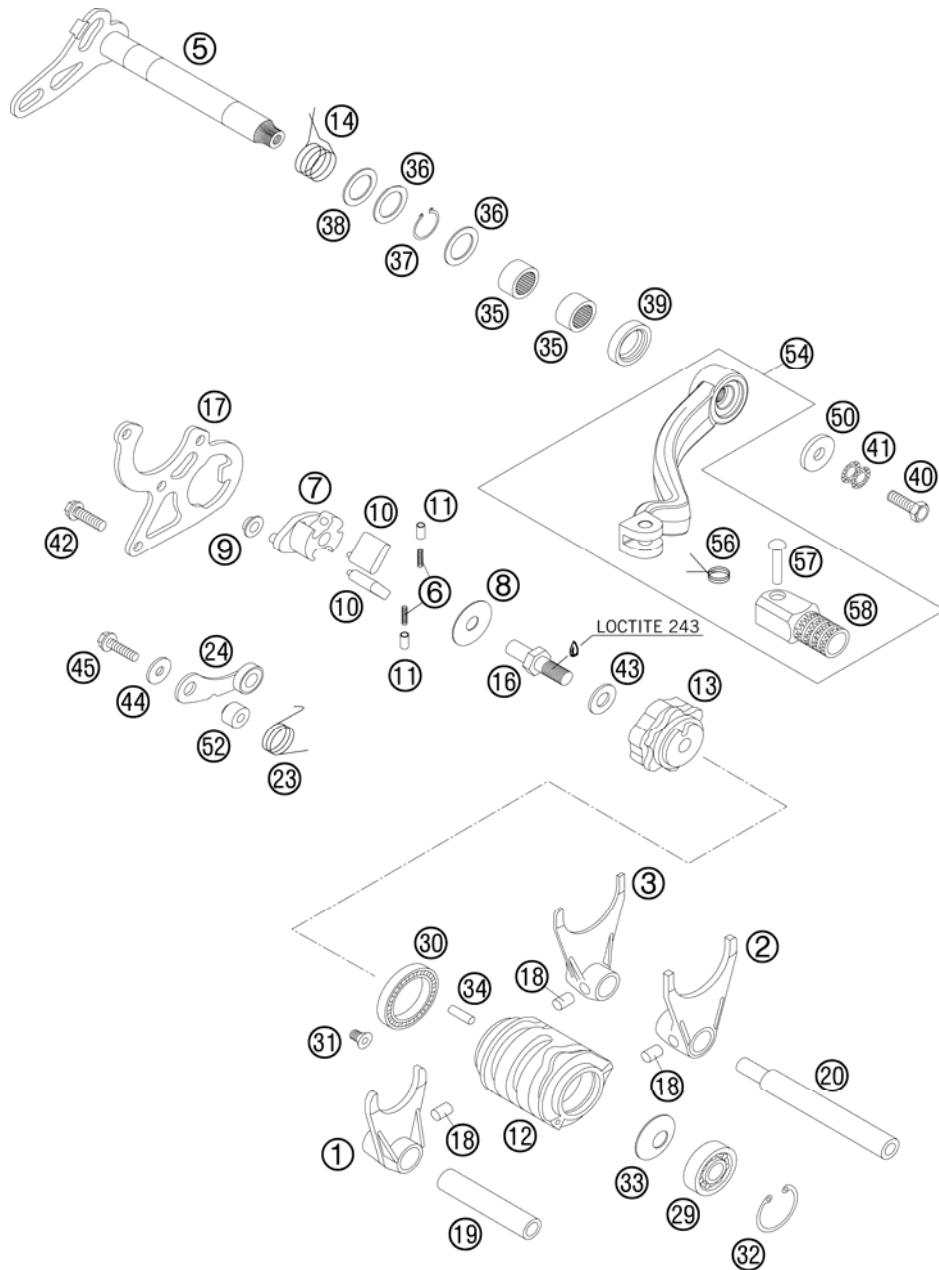
085233360 / C085233361

* NEW PART

X AS REQUIRED

SHIFTING MECHANISM

200 EXC 2008



| FIG | PART NUMBER | DESCRIPTION | QTY |
|-----|-------------|--------------------------------|-----|
| 1* | 50334001200 | SHIFTING FORK 5TH/6TH GEAR | 1 |
| 2* | 50334002200 | SHIFTING FORK 2ND/4TH GEAR | 1 |
| 3* | 50334003200 | SHIFTING FORK 1ST/3RD GEAR | 1 |
| 5 | 50334005000 | SHIFTING SHAFT 125/200'98 | 1 |
| 6 | 50334007052 | SPRING FOR RATCHET 0,5X11,5 | 2 |
| 7 | 50334007000 | RATCHET SUPPORT 125/200'98 | 1 |
| 8 | 50334007054 | STOP DISK 8,2X26X0,7 | 1 |
| 9 | 50334007053 | BUSHING 6X8X12X4,5 | 1 |
| 10 | 50334007050 | SHIFTING RATCHET 125/200'98 | 2 |
| 11 | 50334007051 | PRESSURE END PAD 4,1X5,6X8,4 | 2 |
| 12 | 50334012300 | SHIFTING DRUM 06 | 1 |
| 13 | 50334013000 | LOCATING DRUM 125/200'98 | 1 |
| 14 | 50334014000 | RETURN SPRING 3MM | 1 |
| 16 | 50334016000 | SPECIAL SCREW M8X21,5 WS=12 | 1 |
| 17 | 50334017000 | SHIFTING GATE 3MM 125/200'98 | 1 |
| 18 | 0402061000 | NEEDLE ROLLER ZRB 6X10 | 3 |
| 19 | 50334019000 | SHIFTING ROD DRIVE 11,8X67,5 | 1 |
| 20 | 50334020000 | SHIFT. ROD DRIVE END 11,8X94,5 | 1 |
| 23 | 50334023000 | LOCATING LEVER SPRING 2,5MM'98 | 1 |
| 24 | 50334024144 | LOCATING LEVER CPL. 08 | 1 |
| 29 | 0625060006 | BALL BEARING 6000 RS1 C3 | 1 |
| 30 | 0625618050 | BALL BEARING 61805 C3 | 1 |
| 31 | 0991050102 | FLAT H.SCEW DIN7991-M5X10 10.9 | 1 |
| 32 | 0472260120 | LOCK RING DIN0472-26X1,2 | 1 |
| 33 | 0093251209 | SPRING WASHER 12,2X25X0,9 | 1 |
| 34 | 0402040980 | NEEDLE ROL.DIN5402 NRB 4X9,8 | 1 |
| 35 | 54632095000 | NEEDLE BEAR.HK 1412 14X20X12 | 2 |
| 36 | 49033031000 | STOP DISK 14,3X20X1 | 2 |
| 37 | 0471140100 | LOCK WASHER DIN0471-14X1 | 1 |
| 38 | 49033031015 | STOP DISK 14,2X22X1,5 | 1 |
| 39 | 0760142460 | SHAFT SEAL RING 14X24X6 B | 1 |
| 40 | 0933060165 | HH SCREW DIN0933-M 6X16 10.9 | 1 |
| 41 | 50233041000 | PAIR OF WASHERS M 6 NORDLOCK | 1 |
| 42 | 0015060163 | HH COLLAR SCREW M 6X16 WS=8 | 3 |
| 43 | 0125080003 | WASHER DIN0125-A 8,4 | 1 |
| 44 | 03490000050 | WASHER DIN7349-5X15X2 | 1 |

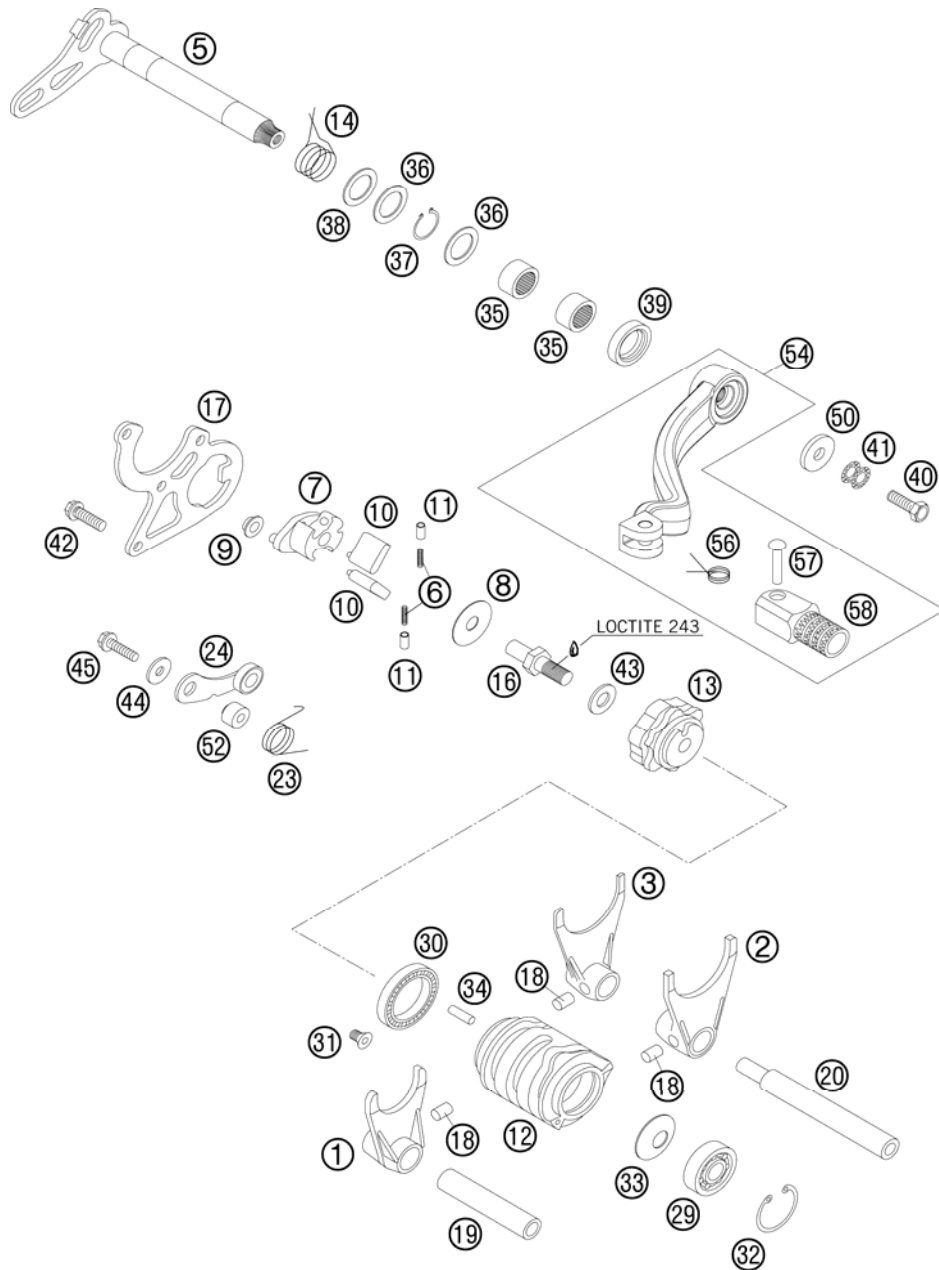
085233410 / C085233410

* NEW PART

X AS REQUIRED

SHIFTING MECHANISM

200 EXC 2008

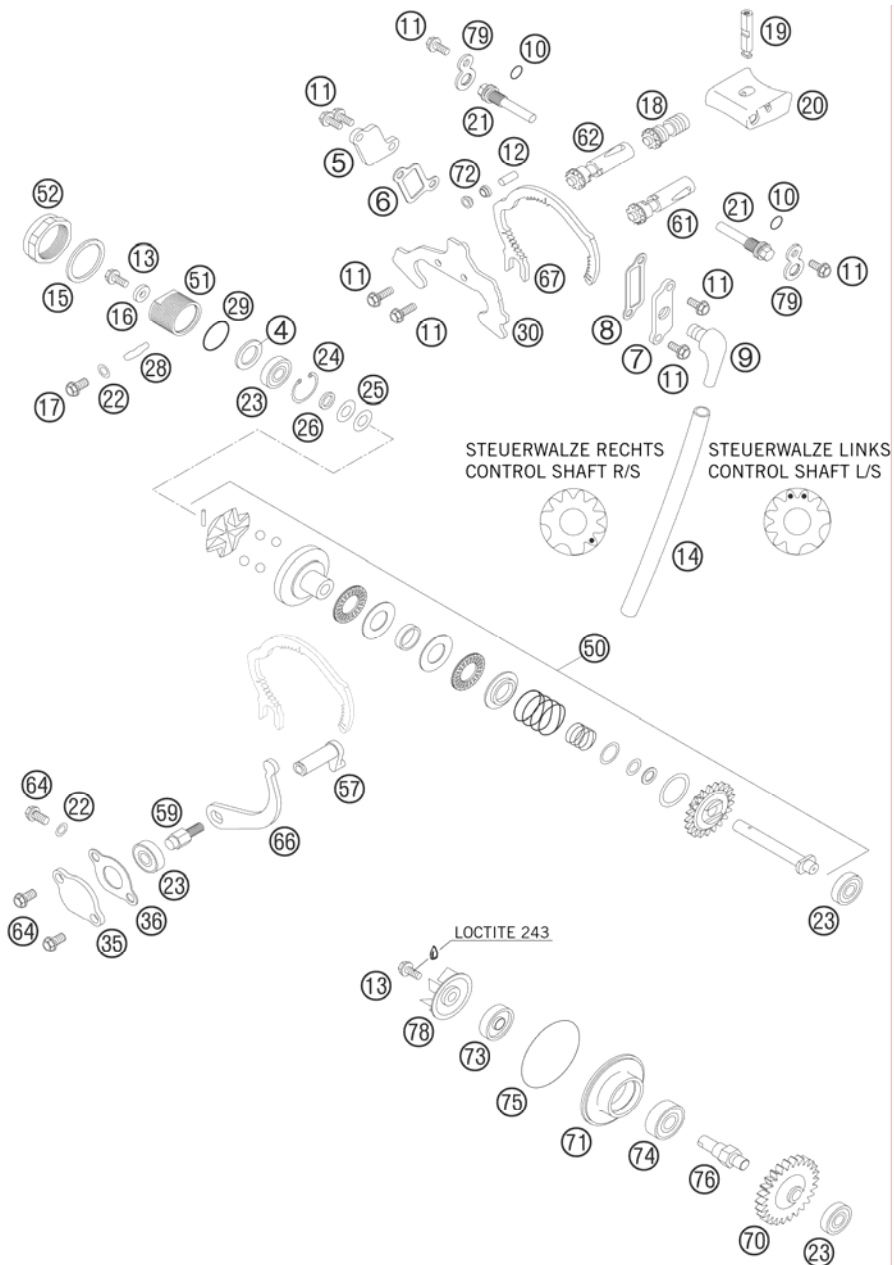


| FIG | PART NUMBER | DESCRIPTION | QTY |
|-----|-------------|--------------------------------|-----|
| 45 | 0015050203 | HH COLLAR SCREW M 5X20 WS=8 | 1 |
| 50 | 50232050001 | STEEL WASHER 6,4X17X3 | 1 |
| 52 | 54634052300 | SLEEVE FOR LOCKING LEVER | 1 |
| 54 | 54734031000 | SHIFT LEVER CPL. 2-STROKE 2001 | 1 |
| 56 | 54634032100 | SHIFTING LEVER SPRING 250 | 1 |
| 57 | 54634031050 | BOLT 6X25 FOR SHIFT LEVER | 1 |
| 58 | 54634131000 | STEP PLATE FOR SHIFT LEVER 250 | 1 |

085233410 / C085233410

* NEW PART

X AS REQUIRED

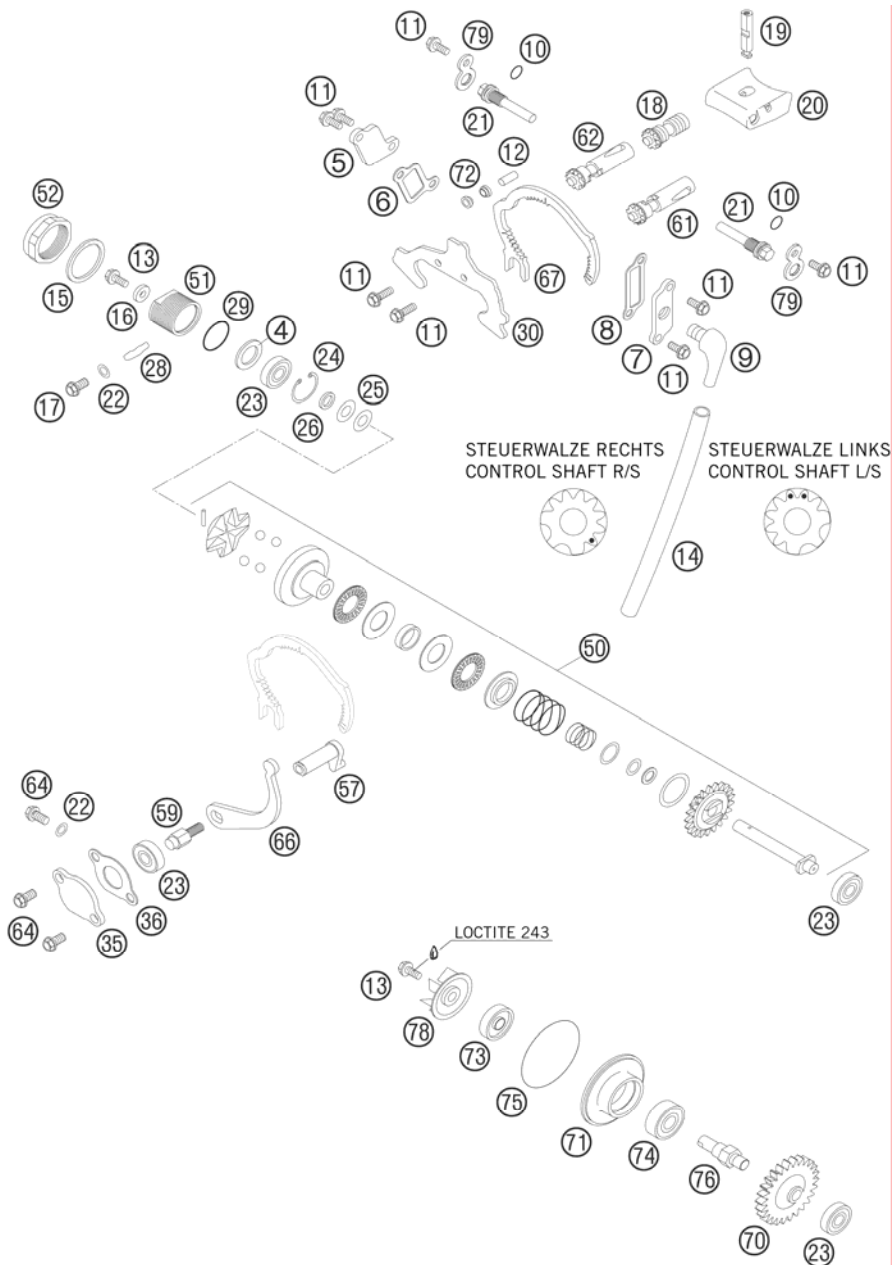


| FIG | PART NUMBER | DESCRIPTION | QTY |
|-----|-------------|--------------------------------|-----|
| 4 | 49033031015 | STOP DISK 14,2X22X1,5 | 1 |
| 5 | 50337005000 | SIDE COVER R/S '98 | 1 |
| 6 | 50337006000 | GASKET SIDE COVER R/S | 1 |
| 7 | 50337007100 | SIDE COVER LEFT M10 2002 | 1 |
| 8 | 50337008000 | GASKET SIDE COVER L/S | 1 |
| 9 | 50330022000 | ANGLE PIEC 90 DEGREE M10X1 02 | 1 |
| 10 | 0770008020 | O-RING 8,00X2,00 NBR | 2 |
| 11 | 0014050123 | HH COLLAR SCREW M 5X12 WS=6 | 8 |
| 12 | 0402051600 | NEEDLE ROL. DIN5402 NRB 5X15,8 | 3 |
| 13 | 0015050123 | HH COLLAR SCREW M 5X12 WS=8 | 2 |
| 14 | 50332095200 | TUBE RUBBER 6X9 DVOH 200MM | 1 |
| 15 | 0603262322 | CU-SEAL RING DIN7603-26X32X2 | 1 |
| 16 | 50337050064 | WASHER 5,2 X 12 X 3 | 1 |
| 17 | 0015060103 | HH COLLAR SCREW M 6X10 WS=8 | 1 |
| 18 | 52337018044 | ECCENTRIC FOR CRANKBOLT 200'98 | 1 |
| 19 | 52337019000 | CRANK BOLT F.CONTROL FL.200'98 | 1 |
| 20 | 52337020000 | CONTROL FLAP 200 '98 | 1 |
| 21 | 51237021000 | AXLE FOR CONTRIL FLAP 01 | 2 |
| 22 | 0603061001 | CU-SEAL RING DIN7603-6X10X1 | 2 |
| 23 | 0625006087 | GROOVED BALL BEAR. 608 2RS C3 | 4 |
| 24 | 0472022100 | CIRCLIP DIN0472-22X1 | 1 |
| 25 | 0093821606 | WASHER DIN2093-8,2X16X0,6 | 2 |
| 26 | 50337050063 | SPACER BUSHING 8X12X2,3 | 1 |
| 28 | 00099300011 | O-RINGSTRING 4MM NBR 70 PER/M | x |
| 29 | 0770160030 | O-RING 16,00X3,00 NBR 70 | 1 |
| 30 | 52337030000 | SHEET METAL GUIDE 3MM 200'98 | 1 |
| 35 | 50337035000 | CLOSING COVER '98 | 1 |
| 36 | 50337035050 | CLOSING COVER GASKET 1MM | 1 |
| 50 | 52337050044 | CENTRIFUGAL TIMER CPL. 200'98 | 1 |
| 51 | 50337050062 | BUSHING HOLDER M 26X1 '98 | 1 |
| 52 | 50337050061 | CLOSING NUT M 26X1 WS=30 | 1 |
| 57 | 50337057000 | CONTROL LEVER 125/200'98 | 1 |
| 59 | 50337059000 | CONTROL SHAFT M 6 WS=10 '98 | 1 |
| 61 | 52337061144 | CONTROL SHAFT CPL.L/S 200 2001 | 1 |
| 62 | 52337062144 | CONTROL SHAFT CPL.R/S 200 2001 | 1 |
| 64 | 0015060123 | HH COLLAR SCREW M 6X12 WS=8 | 3 |

085233710 / C085033711

* NEW PART

X AS REQUIRED

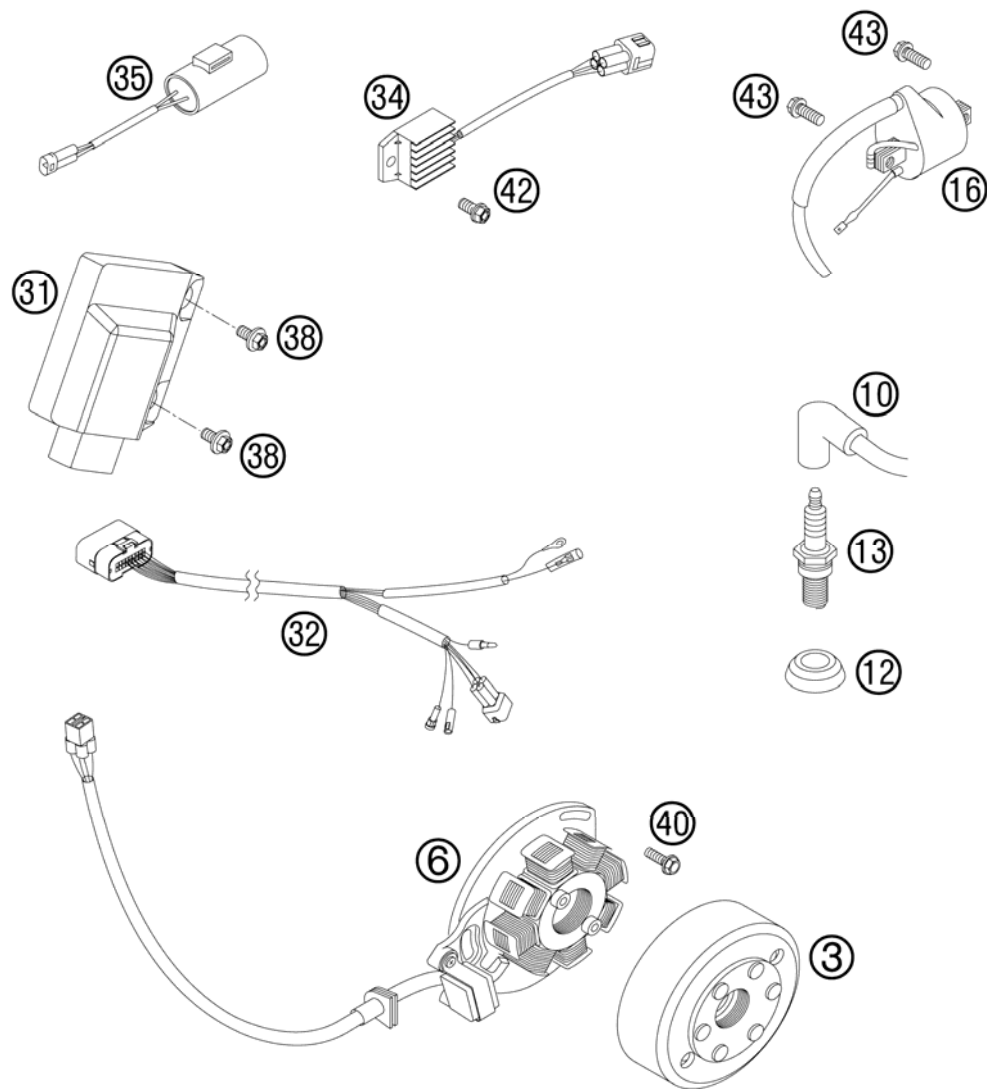


| FIG | PART NUMBER | DESCRIPTION | QTY |
|-----|-------------|--------------------------------|-----|
| 66 | 50337066000 | LEVER F. CONTROL SEGMENT '98 | 1 |
| 67 | 52337067000 | CONTROL SHAFT SEGMENT 200'98 | 1 |
| 70 | 50335054026 | DRIVE WHEEL 26-T 125/200'98 | 1 |
| 71 | 50335056000 | BUSHING SUPPORT WATER PUMP '98 | 1 |
| 72 | 50337072000 | ROLLER GUIDE 5X6,1X8X4 '98 | 6 |
| 73 | 0760082472 | SHAFT SEAL RING 8X24X7 A DUO | 1 |
| 74 | 0625060001 | BALL BEARING 6000/C3 | 1 |
| 75 | 0770049025 | O-RING 49,00X2,50 NBR | 1 |
| 76 | 50335054050 | WATER PUMP SHAFT 125/200'98 | 1 |
| 78 | 54835005000 | WATER PUMP WHEEL 07 | 1 |
| 79 | 50337079000 | LOCK METAL SHEET 2MM '98 | 2 |

085233710 / C085033711

* NEW PART

X AS REQUIRED



| FIG | PART NUMBER | DESCRIPTION | QTY |
|-----|-------------|--------------------------------|-----|
| 3 | 50339005200 | FLYWHEEL KOKUSAN 2K-3 '98 | 1 |
| 6 | 54839204000 | STATOR KOKUSAN 2K-3 2005 | 1 |
| 10 | 47039090000 | SPARK PLUG CAP NGK REINFORC.04 | 1 |
| 12 | 50231012000 | SEALING CUP FOR SPARK PLUG | 1 |
| 13 | 54331093310 | SPARK PLUG NGK BR8EG | 1 |
| 16 | 50339006000 | IGNI.COIL KOKU. IG5127 | 1 |
| 31* | 52339031900 | CDI UNIT 200 XC/EXC 08 | 1 |
| 32* | 54839032300 | WIRING HARNESS F.CDI 2-ST.SX07 | 1 |
| 34 | 80011034000 | VOLTAGE REGULATOR 04 | 1 |
| 35 | 50311035000 | CONDENSATOR 2200MF ADP-48 2000 | 1 |
| 38* | 0023060123 | COLLAR SCREW M6X12 TX | x |
| 40 | 0015050163 | HH COLLAR SCREW M 5X16 WS=8 | 3 |
| 42* | 0025060126 | HH COLLAR SCREW M6X12 TX30 | 1 |
| 43* | 0025060206 | HH COLLAR SCREW M6X20 TX30 | 2 |

085233911 / C085033912

* NEW PART

X AS REQUIRED



KTM-Sportmotorcycle AG
A-5230 Mattighofen
www.ktm.at

KTM Group Partner



3CM082030HEN



Art.Nr.: 3CM082030HEN 4/2007