

# Engine 790 DUKE

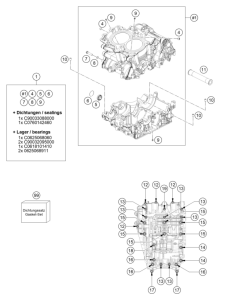
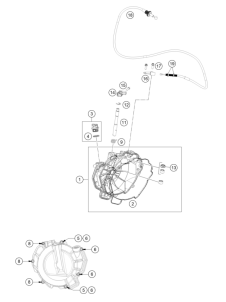
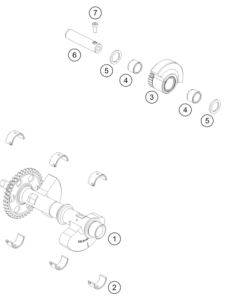
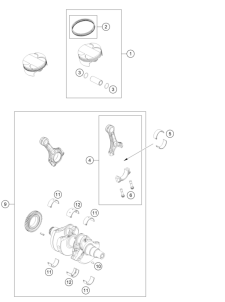
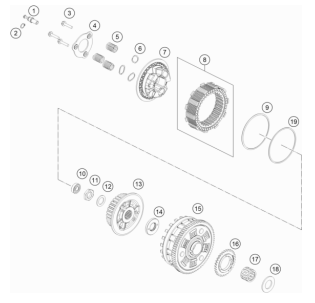
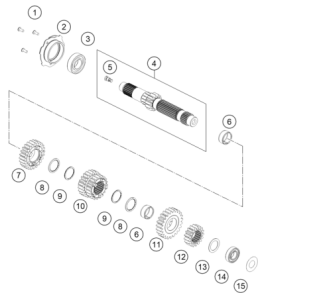
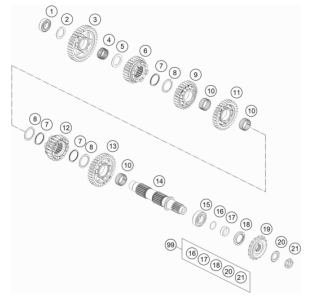
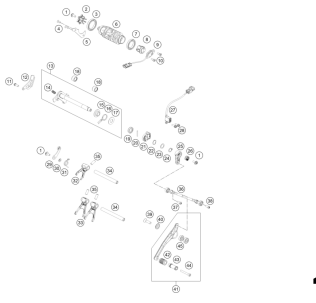
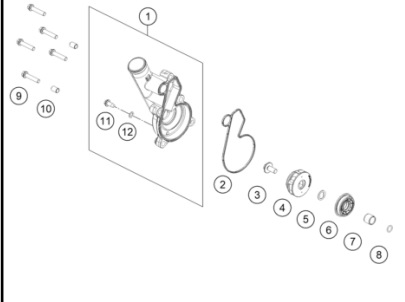
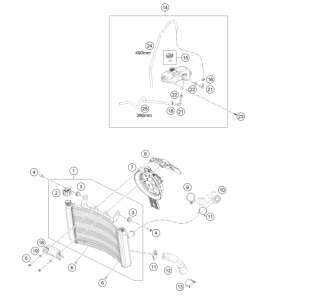
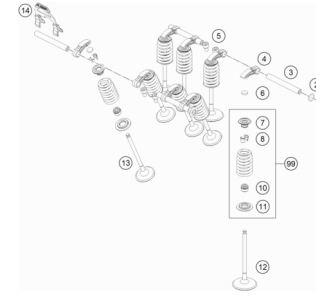
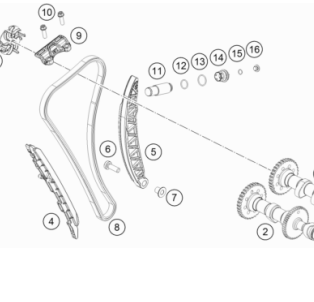
ART.-NR.: P2C9006M00K24EN

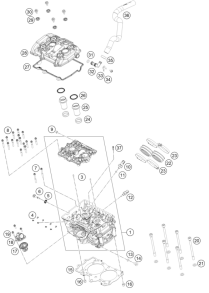
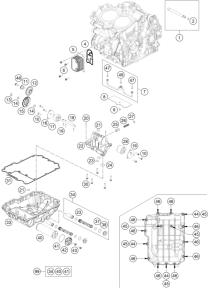
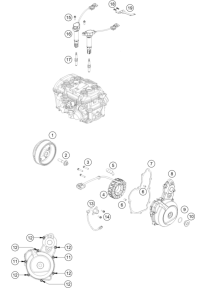
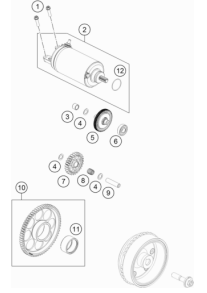
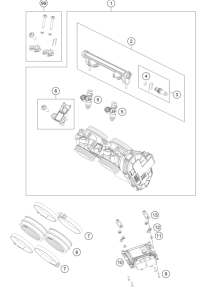


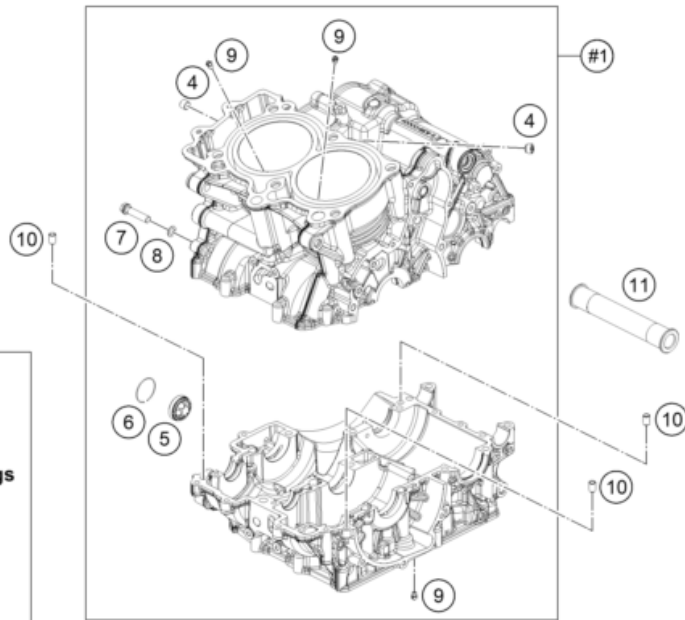


All information contained is without obligation. KTM Sportmotorcycle GmbH particularly reserves the right to modify any equipment, technical specifications, prices, colors, shapes, materials, services, service work, constructions, equipment and the like so as to adapt them to local conditions or to cancel any of the above items, all without previous announcement and without giving reasons. KTM may stop manufacturing certain models without previous notice. KTM shall not be held liable for any deviations of availability and/or ability to deliver, illustrations, descriptions, printing and/or other errors. The illustrated models partly contain extra equipment, which is not applied to standard models.

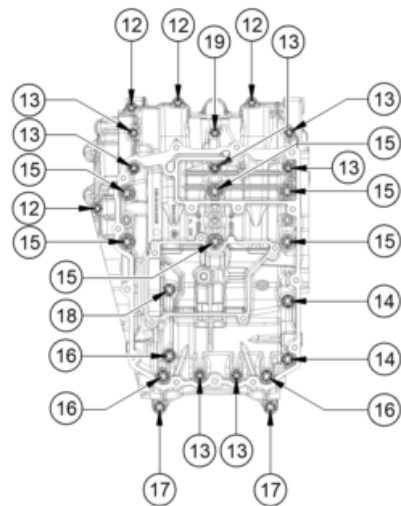
© by KTM Sportmotorcycle GmbH, Mattighofen AUSTRIA; All rights reserved; Reprint, also in extracts, with written allowance of KTM Sportmotorcycle GmbH, Mattighofen only.

|   |  |  |   |
|---|--|--|---|
| <p><b>ENGINE CASE</b></p>  <p><b>3</b></p>   | <p><b>CLUTCH COVER</b></p>  <p><b>4</b></p>                 | <p><b>BALANCER SHAFT</b></p>  <p><b>5</b></p>                 | <p><b>CRANKSHAFT, PISTON</b></p>  <p><b>6</b></p>  |
| <p><b>CLUTCH</b></p>  <p><b>7</b></p>        | <p><b>TRANSMISSION I - MAIN SHAFT</b></p>  <p><b>8</b></p> | <p><b>TRANSMISSION II - COUNTERSHAFT</b></p>  <p><b>9</b></p> | <p><b>SHIFTING MECHANISM</b></p>  <p><b>10</b></p> |
| <p><b>WATER PUMP</b></p>  <p><b>12</b></p> | <p><b>COOLING SYSTEM</b></p>  <p><b>13</b></p>           | <p><b>VALVE DRIVE</b></p>  <p><b>14</b></p>                 | <p><b>TIMING DRIVE</b></p>  <p><b>15</b></p>     |

|  |   |  |   |
|--|---|--|---|
| <p><b>CYLINDER HEAD</b></p>  <p><b>16</b></p> | <p><b>LUBRICATING SYSTEM</b></p>  <p><b>17</b></p> | <p><b>IGNITION SYSTEM</b></p>  <p><b>19</b></p> | <p><b>ELECTRIC STARTER</b></p>  <p><b>20</b></p> |
| <p><b>THROTTLE BODY</b></p>  <p><b>21</b></p> |   |  |   |
|  |   |  |   |



- 1
- |    |   |   |   |
|----|---|---|---|
| #1 | 4 | 5 | 6 |
| 7  | 8 | 9 |   |
- + Dichtungen / sealings**  
 1x C90033088000  
 1x C0760142460
- + Lager / bearings**  
 1x C0625068060  
 2x C90032095000  
 1x C0618101410  
 2x 0625068911



216353011

| POS | PARTNUMBER     | PARTNAME                                 | PIECE |
|-----|----------------|--|-------|
| 1   | C9003000024424 | Engine case compl.                       | 1     |
| 4   | 0906100100     | pipe plug DIN 906 M10x1                  | 2     |
| 5   | 59030019200    | OIL SIGHT GLASS                          | 1     |
| 6   | 61030019050    | CIRCLIP OIL LEVEL GLASS 03               | 1     |
| 7   | 0025080356     | HH collar screw M8x35 TX40               | 1     |
| 8   | C0603082131    | Cu ring d8,2/13/1                        | 1     |
| 9   | C90030063070   | oil jet 70 M5                            | 3     |
| 10  | C90030024000   | Dowel                                    | 3     |
| 11  | C90030010000   | housing socket                           | 1     |
| 12  | 00002506030U0  | Hex collar scr., M6x30, ISA 30 w. washer | 4     |
| 13  | 00002506060U0  | Hex collar scr., M6x60, ISA 30 w. washer | 7     |
| 14  | 0025080906     | HH collar screw M8x90 TX40               | 2     |
| 15  | 00002508090U0  | Hex collar scr., M8x90, ISA 40 w. washer | 6     |
| 16  | 0025080656     | HH collar screw M8x65 TX40               | 3     |
| 17  | 0025080556     | HH collar screw M8x55 TX40               | 2     |
| 18  | 0025080456     | HH collar screw M8x45 TX40               | 1     |
| 19  | 00002508065U0  | Hexagon collar nut M8x65 ISA 40 w.washer | 1     |
| 99  | C90030099000   | Engine gasket kit 790 DUKE               | 1     |

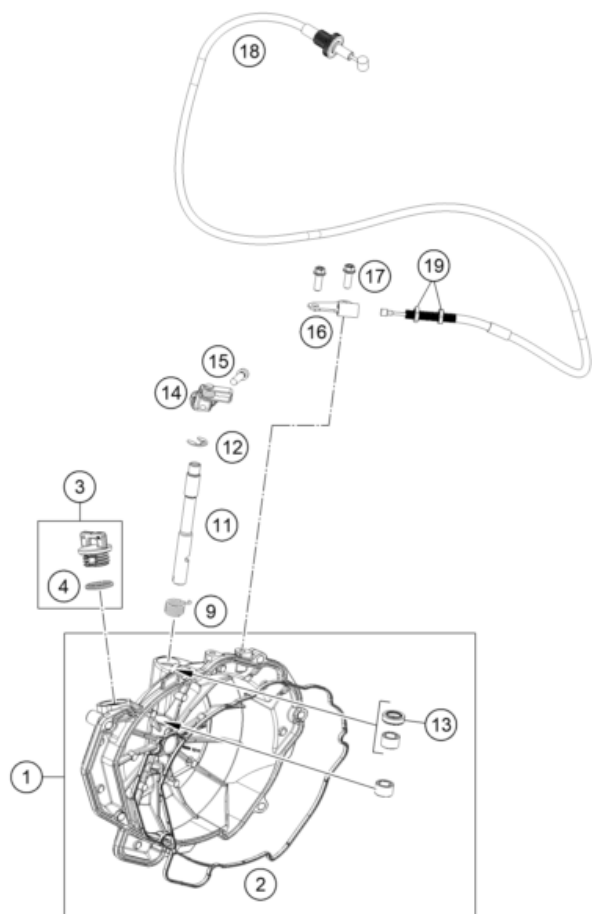
59482

\* NEW PART

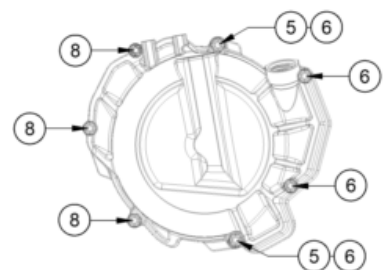
X ON DEMAND

# CLUTCH COVER

Engine 790 DUKE



| POS | PARTNUMBER     | PARTNAME                      | PIECE |
|-----|----------------|-------------------------------|-------|
| 1   | C9003020114441 | Clutch cover cpl.             | 1     |
| 2   | C90030025100   | Mold ring clutch cover        | 1     |
| 3   | C90030020100   | oil plug cpl. M24x3           | 1     |
| 4   | C0770191015    | O-ring 19x3 NBR               | 1     |
| 5   | C90030024000   | Dowel                         | 2     |
| 6   | 0025060356     | HH collar screw M6x35 TX30    | 4     |
| 8   | 0025060256     | HH collar screw M6x25 TX30    | 3     |
| 9   | C90032048003   | clutch release lever spring   | 1     |
| 11  | C90032049000   | clutch release shaft          | 1     |
| 12  | C0799090003    | retaining washer DIN 6799 - 9 | 1     |
| 13  | C0760122060    | Shaft seal ring 32x45x6.5     | 1     |
| 14  | C90032048333   | Release lever assembly cpl.   | 1     |
| 15  | 014580060206S  | Cyl. screw ISO 14580 M6x20 SS | 1     |
| 16  | C90032052100   | Cable retaining bracket       | 1     |
| 17  | 0025060166S    | HH collar screw M6x16 TX30 SL | 2     |
| 18  | C90102090000   | Clutch cable                  | 1     |
| 19  | C0934080006    | Hexagonal nut DIN 934 M8      | 2     |



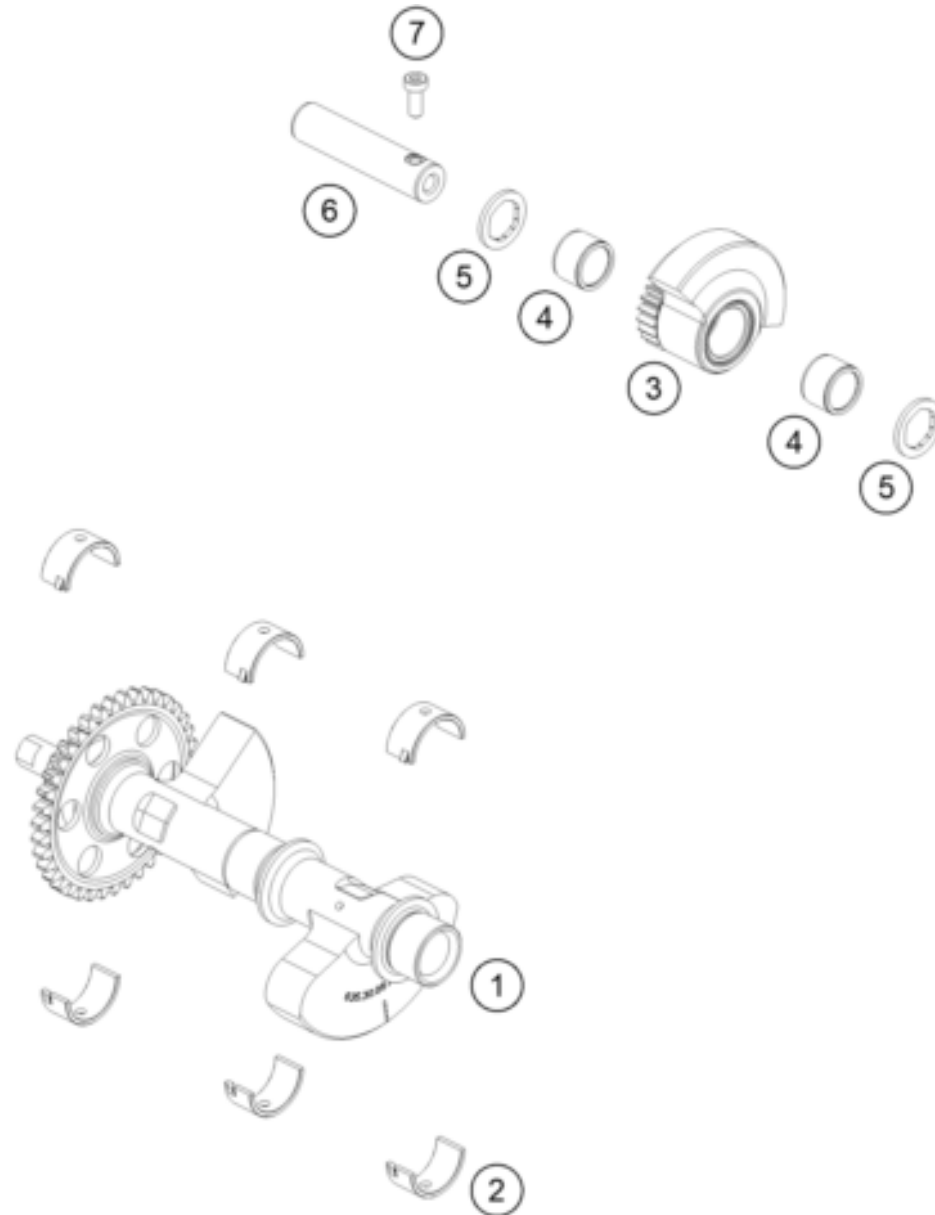
216353020

59483

\* NEW PART X ON DEMAND

# BALANCER SHAFT

Engine 790 DUKE



| POS | PARTNUMBER   | PARTNAME                                | PIECE |
|-----|--------------|---|-------|
| 1   | 63530057144  | Balancer shaft cpl.                     | 1     |
| 2   | 63530057050  | Bearing Shell 22/26/13                  | 6     |
| 3   | 63530059200  | Counter Balancer shaft cpl.             | 1     |
| 4   | 0405151913   | needle roller and cage assy. K 15x19x13 | 2     |
| 5   | C90030059060 | thrust washer 15.5/22.5/2               | 2     |
| 6   | C90030059050 | Bearing bolt                            | 1     |
| 7   | 0984050123S  | CYLIND. SCR. DIN6912 M5X12 8.8          | 1     |

206353030

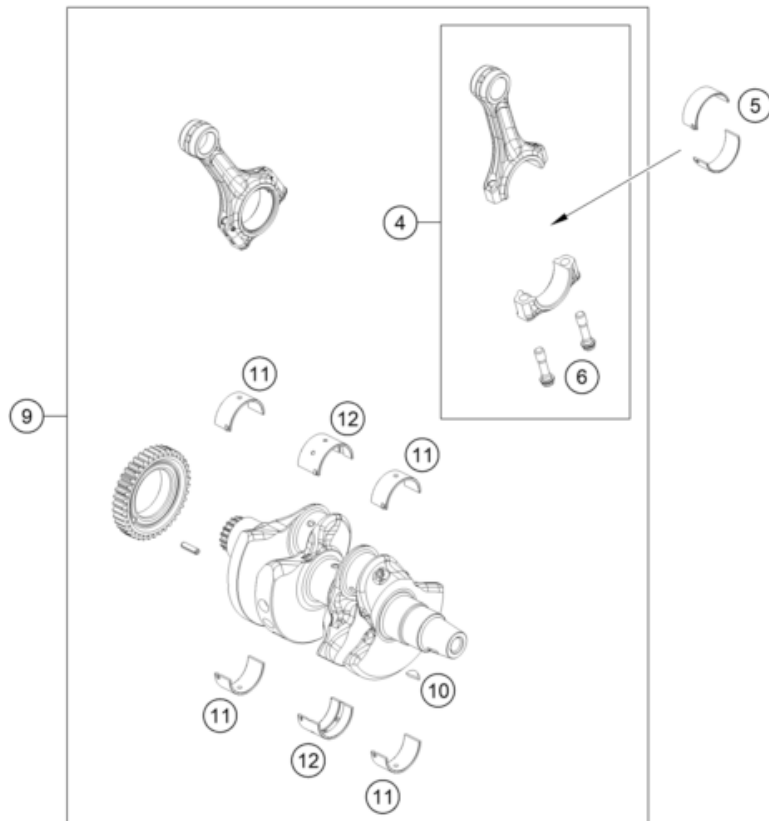
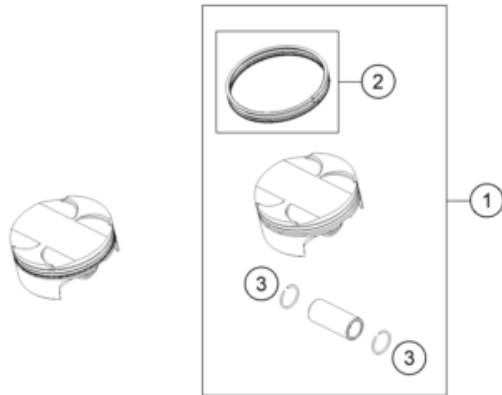
59484

\* NEW PART

X ON DEMAND

# CRANKSHAFT, PISTON

# Engine 790 DUKE



| POS | PARTNUMBER    | PARTNAME                            | PIECE |
|-----|---------------|-------------------------------------|-------|
| 1   | C90030107000  | Piston cpl.                         | 2     |
| 2   | C90030131044  | Piston ring set D88                 | 2     |
| 3   | 63530074000   | Circlip                             | 4     |
| 4   | C90030015000  | connecting rod cpl. (110mm)         | 2     |
| 5   | C900300140001 | Conrod bearing shell, blue 38x41x16 | x     |
| 5   | C900300140002 | Conrod bearing shell, red 38x41x16  | x     |
| 6   | C90830013000  | Connecting rod screw M8x0.75        | 4     |
| 9   | C90030018244  | Crankshaft compl.                   | 1     |
| 10  | C0888040050   | woodruff key DIN 6888 4x5x13        | 1     |
| 11  | C900300820001 | Main bearing, blue 38x42x18         | x     |
| 11  | C900300820002 | Main bearing, red 38x42x18          | x     |
| 12  | C900301820001 | Main bearing, blue 38x42x25         | x     |
| 12  | C900301820002 | Main bearing, red 38x42x25          | x     |

186353060

59486

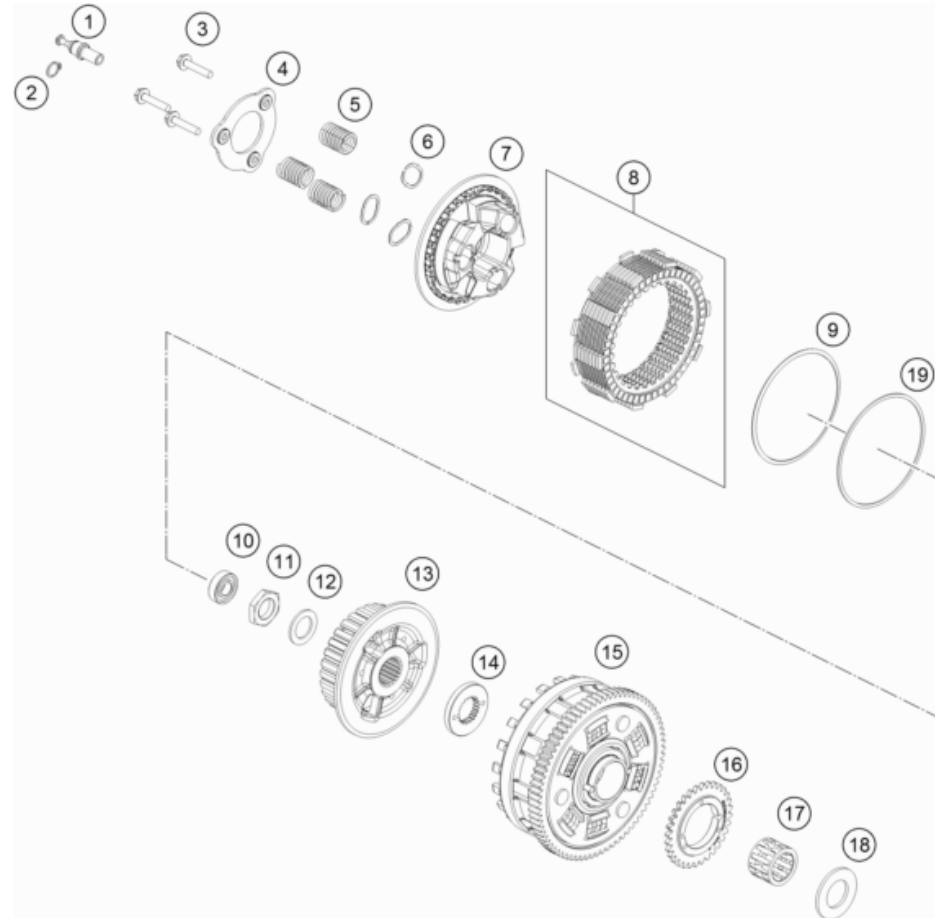
\* NEW PART

X ON DEMAND



# CLUTCH

# Engine 790 DUKE



| POS | PARTNUMBER    | PARTNAME                    | PIECE |
|-----|---------------|-----------------------------|-------|
| 1   | C90032048104  | tension bolt                | 1     |
| 2   | C0471120010   | retaining ring DIN 471 12x1 | 1     |
| 3   | 63532044000   | Collar screw M6x30          | 3     |
| 4   | 63532006000   | Arrestor Pressure Cap       | 1     |
| 5   | 63532005000   | Clutch spring               | 3     |
| 6   | 63532041000   | Clutch spring cover         | 3     |
| 7   | 63532003000   | Pressure Plate              | 1     |
| 8   | 63532011010   | Disc Pack                   | 1     |
| 9   | 63532034000   | Belleville Spring           | 1     |
| 10  | 0625060017    | BALL BEARING 6001.2URS.C3   | 1     |
| 11  | C90036073150  | hex nut M20x1., H=6mm       | 1     |
| 12  | 0252012103100 | Wedge lock washer HLS 20    | 1     |
| 13  | 63532002000   | center clutch               | 1     |
| 14  | 63532021000   | Spline Washer               | 1     |
| 15  | 63532001044   | Clutch Cage cpl.            | 1     |
| 16  | C90038001232  | Oil pump gear 32th          | 1     |
| 17  | 0405263525    | Needle bearing PK26x35x24.8 | 1     |
| 18  | C90032020000  | Washer, 26/47/2.8           | 1     |
| 19  | 63532035000   | Seat Judder Spring          | 1     |

186353210

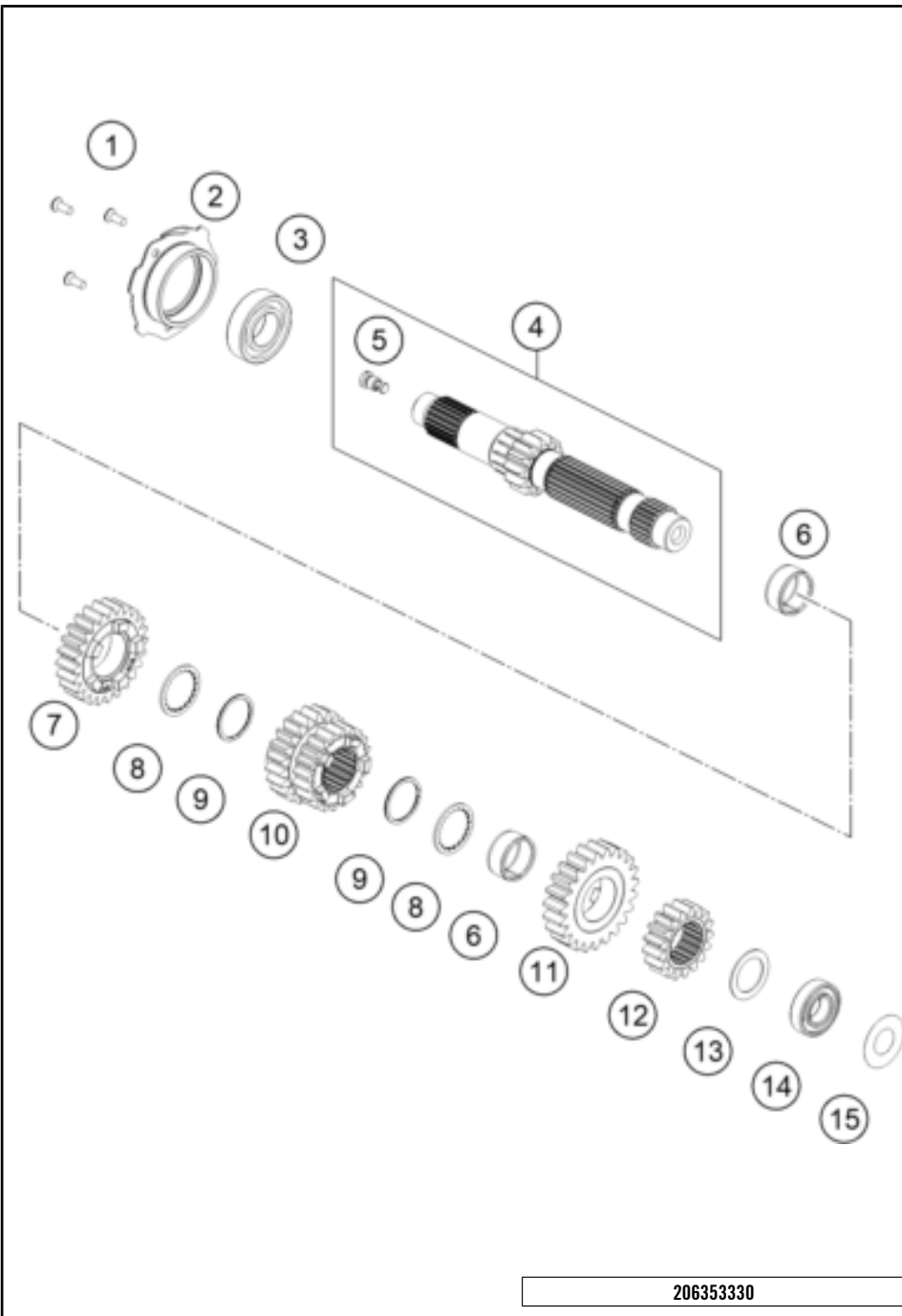
59487

\* NEW PART

X ON DEMAND

# TRANSMISSION I - MAIN SHAFT

Engine 790 DUKE

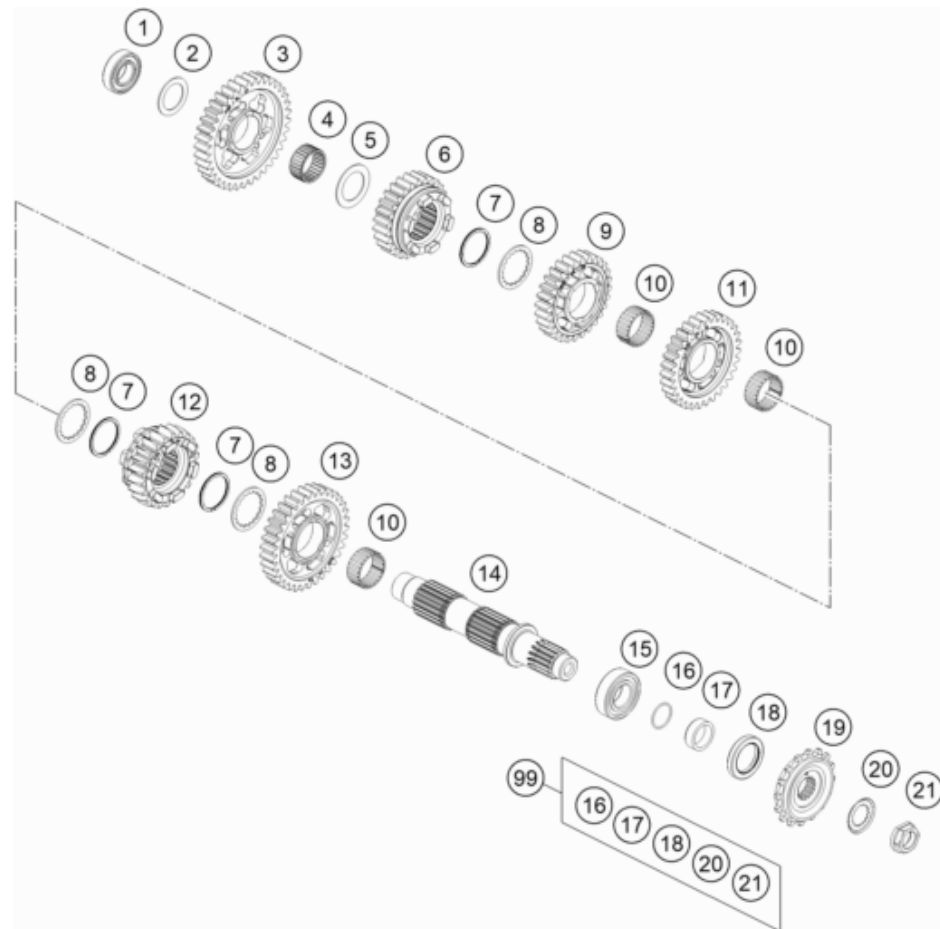


| POS | PARTNUMBER     | PARTNAME                              | PIECE |
|-----|----------------|---------------------------------------|-------|
| 1   | C010642060166S | Hex screw ISO10642-M6x16 self-locking | 3     |
| 2   | C90030068000   | Bearing flange                        | 1     |
| 3   | 0625062280     | ball bearing 62/28 CM                 | 1     |
| 4   | 63633001044    | Main shaft preassembled               | 1     |
| 5   | 63533001030    | reducing jet Ø0.3mm M8                | 1     |
| 6   | 0405242813G    | NEEDLE BEAR.K 24X28X13 DIVIDED        | 2     |
| 7   | 63633005000    | Idle gear 5th gear                    | 1     |
| 8   | 63533045000    | toothed washer                        | 2     |
| 9   | 0471026000     | circlip d26                           | 2     |
| 10  | 63633003000    | Sliding gear 3rd/4th gear             | 1     |
| 11  | 63633006000    | Idle gear 6th gear                    | 1     |
| 12  | 63533002000    | Solid gear 2. G                       | 1     |
| 13  | 63533032000    | stop disc 22.2/31.7/1                 | 1     |
| 14  | 0625068911     | Grooved ball bearing 22x45x12 C4H     | 1     |
| 15  | C90033088000   | sealing washer 22x44x0.2              | 1     |

206353330

59490

\* NEW PART X ON DEMAND



| POS | PARTNUMBER     | PARTNAME                           | PIECE |
|-----|----------------|------------------------------------|-------|
| 1   | 0625068911     | Grooved ball bearing 22x45x12 C4H  | 1     |
| 2   | 63533032000    | stop disc 22.2/31.7/1              | 1     |
| 3   | 63533011000    | Idler Gear 1. G                    | 1     |
| 4   | 0405242813     | NEEDLE BEAR. K 24X28X13 TN         | 1     |
| 5   | 63533034000    | stop disc 24.3/35.75/1             | 1     |
| 6   | 63633015000    | Sliding gear 5th gear              | 1     |
| 7   | 0471029000     | TWISTED CIRCLIP D29                | 3     |
| 8   | 63533033000    | Stop Disc 27/36/1.5                | 3     |
| 9   | 63633014000    | Idle gear 4th gear                 | 1     |
| 10  | 0405263013G    | needle bearing 26x30x13 splite     | 3     |
| 11  | 63633013000    | Idle gear 3rd gear                 | 1     |
| 12  | 63633016000    | Sliding gear 6th gear              | 1     |
| 13  | 63533012000    | Idler Gear 2. G                    | 1     |
| 14  | 63533010000    | Output shaft                       | 1     |
| 15  | 49030023000    | cylindrical roller bearing NJ205   | 1     |
| 16  | C0770020220    | O-RING 25,12X1,78 NBR70            | 1     |
| 17  | C90033032011   | Wear bushing, sprocket 11 mm       | 1     |
| 18  | C0760003247000 | Shaft seal ring 32x47x7 AS-P FPM80 | 1     |
| 19  | C90033029116   | Front sprocket 16T damped          | 1     |
| 20  | C90033031000   | Lock washer                        | 1     |
| 21  | C90033032300   | Rear sprocket nut M20x1.5          | 1     |
| 99  | C00050000992   | Repair kit countershaft            | x     |

186353360

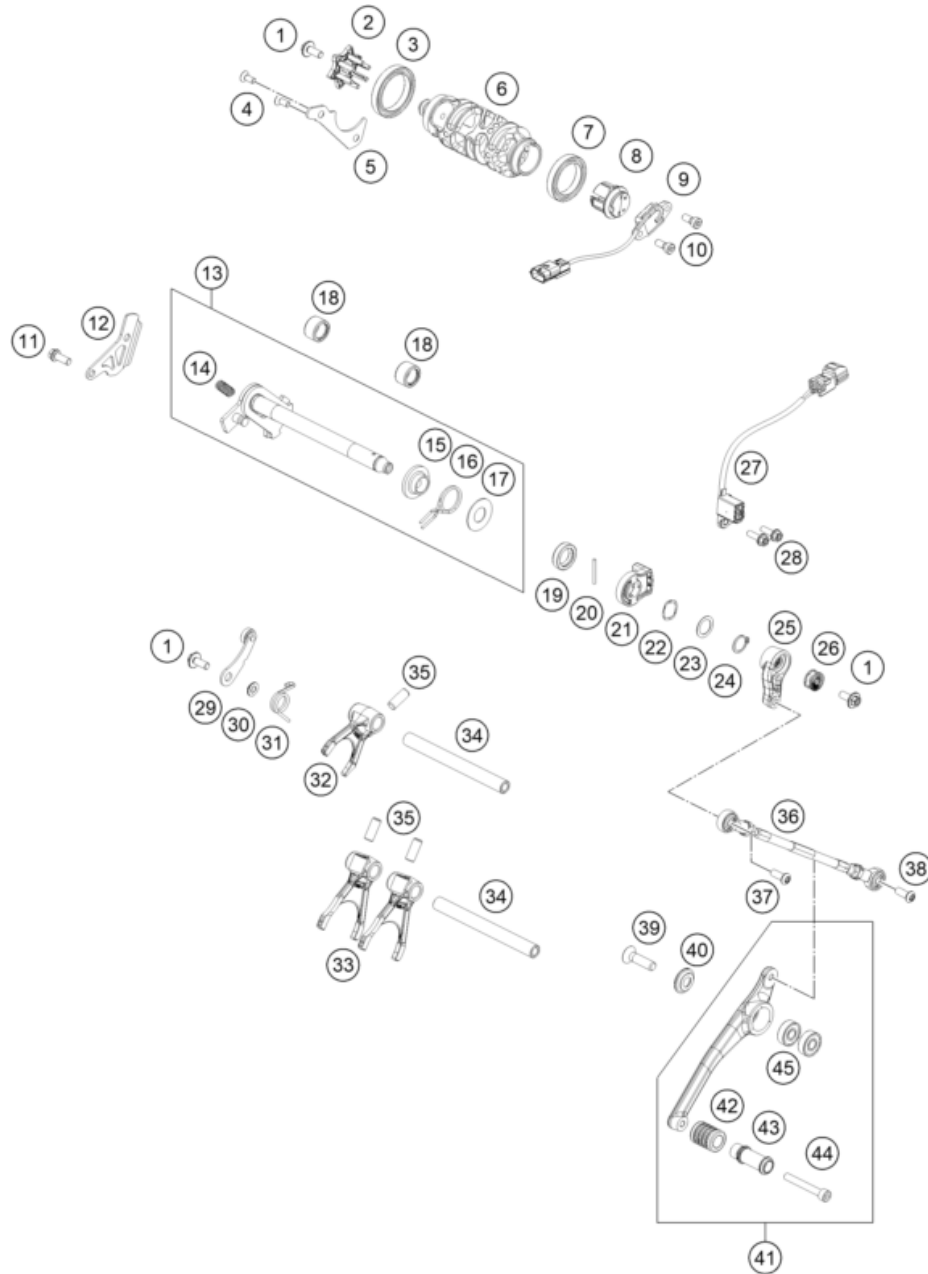
59491

\* NEW PART

X ON DEMAND

# SHIFTING MECHANISM

Engine 790 DUKE



| POS | PARTNUMBER    | PARTNAME                           | PIECE |
|-----|---------------|------------------------------------|-------|
| 1   | 0024060156S   | HH collar screw M6x15 TX30         | 1     |
| 2   | C90034015000  | Shift star                         | 1     |
| 3   | C0625068070   | deep groove ball bearing 6807      | 1     |
| 4   | 0019050121S   | INT. TORX FLAT HEAD M5X12 T25      | 2     |
| 5   | C90034011200  | Bearing retaining bracket          | 1     |
| 6   | 63534012001   | shift drum 6G                      | 1     |
| 7   | C0625068060   | deep groove ball bearing 6806 C3   | 1     |
| 8   | C90034012020  | magnet holder cpl.                 | 1     |
| 9   | C90011023000  | gear position sensor               | 1     |
| 10  | 0984050123S   | CYLIND. SCR. DIN6912 M5X12 8.8     | 2     |
| 11  | 0025060166S   | HH collar screw M6x16 TX30 SL      | 1     |
| 12  | C90033022000  | bearing retaining plate            | 1     |
| 13  | 63534005033   | shift cpl.                         | 1     |
| 14  | 56534013100   | TENSIONING SPRING 0,8MM            | 1     |
| 15  | 54634020000   | SPRING GUIDE                       | 1     |
| 16  | 61234014000   | RETURNSPRING 2MM                   | 1     |
| 17  | 54634050000   | STOP DISK 14X30X1                  | 1     |
| 18  | C90032095000  | needle sleeve HK 1412 14x20x12     | 2     |
| 19  | C0760142460   | radial shaft seal 14x24x6 B        | 1     |
| 20  | C0007025241   | dowel pin DIN 7 A1 2.5m6x24        | 1     |
| 21  | C90034050000  | magnet holder                      | 1     |
| 22  | 63534050010   | wave spring Smalley SSB-0075-S17   | 1     |
| 23  | C0988142005   | Thrust washer DIN 988 14x20x0.5    | 1     |
| 24  | C0471140100   | retaining ring DIN 471 14x1        | 1     |
| 25  | 6413403000033 | Pull Rod                           | 1     |
| 26  | C90033041500  | Nordlock washer M6                 | 1     |
| 27  | 63534051000   | Shift assistant sensor             | 1     |
| 28  | 0025060166S   | HH collar screw M6x16 TX30 SL      | 2     |
| 29  | C90034024000  | detent arm cpl.                    | 1     |
| 30  | C90034052000  | step washer                        | 1     |
| 31  | C90034023000  | Detent arm spring                  | 1     |
| 32  | 63534002000   | shift fork 5-6 gear                | 1     |
| 33  | 63534001100   | Shift fork                         | 2     |
| 34  | C90034019100  | shift fork shaft                   | 2     |
| 35  | C0402080200   | needle roller D8x20                | 3     |
| 36  | C90734036044  | Shift linkage compl.               | 1     |
| 37  | 0738060205S   | Oval head screw ISR M6x20-A2-70-MK | 1     |
| 38  | 0738060165S   | Rnd. hd. scr. TX M6x16 A2-70 S     | 1     |

206353411

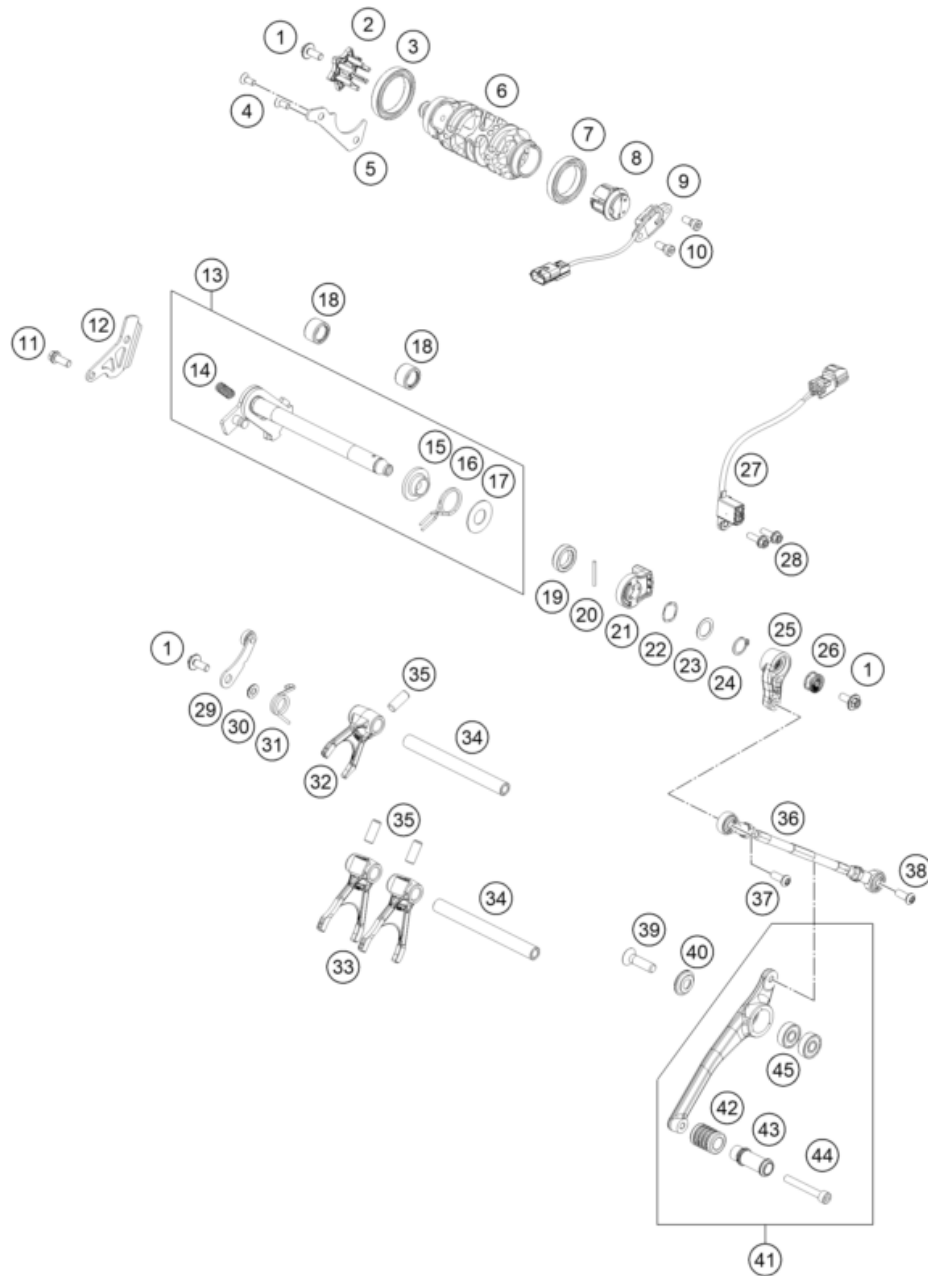
59492

\* NEW PART

X ON DEMAND

# SHIFTING MECHANISM

Engine 790 DUKE



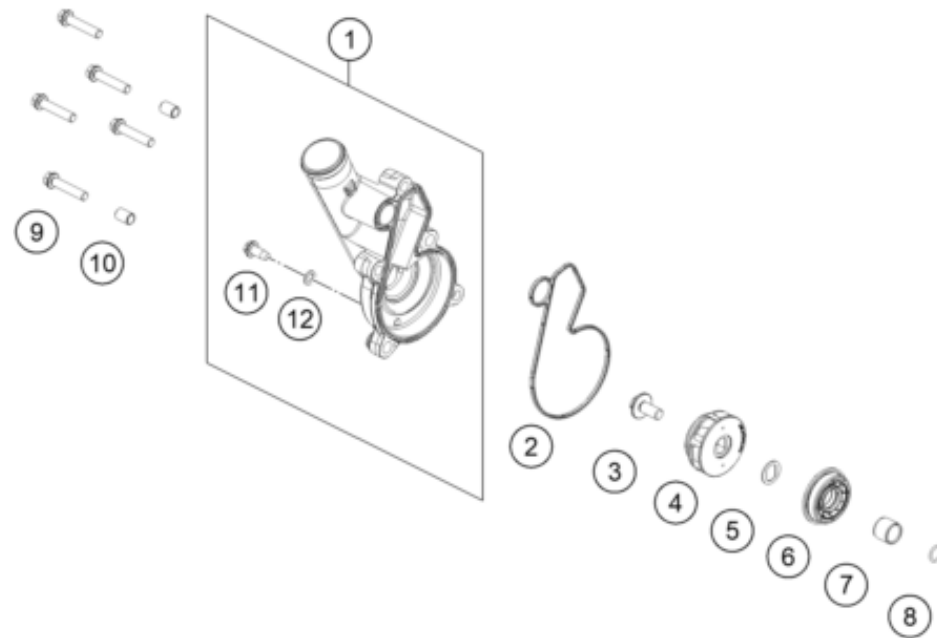
| POS | PARTNUMBER      | PARTNAME                            | PIECE |
|-----|-----------------|-------------------------------------|-------|
| 39  | C0000190803000S | Countersunk screw with ISR45 M8x30  | 1     |
| 40  | C90734031020    | Special washer D=23x5               | 1     |
| 41  | C90734031044C1  | Gear shift lever compl.             | 1     |
| 42  | C90734035000    | Rubber Protector                    | 1     |
| 43  | C90734032100    | Gear lever                          | 1     |
| 44  | C0047620604500S | Cylinderscrew ISO 4762-M6x45-8.8-MK | 1     |
| 45  | C0410000800700  | Bearing 608 2RS                     | 2     |

206353411

59492

\* NEW PART

X ON DEMAND



| POS | PARTNUMBER     | PARTNAME                        | PIECE |
|-----|----------------|---------------------------------|-------|
| 1   | C9003505200041 | water pump cover                | 1     |
| 2   | C90035053000   | water pump cover gasket         | 1     |
| 3   | 0024060136S    | HH Collar screw M6x13 TX30 SL   | 1     |
| 4   | C90035055000   | Water pump impeller compl.      | 1     |
| 5   | C90035055150   | double-d washer 16x1 SST        | 1     |
| 6   | C0760153459    | radial shaft seal 34.5x15x9 Duo | 1     |
| 7   | C90036072020   | Wear bushing 12/15/12,5         | 1     |
| 8   | C07700900151   | O-RING 9x1,5 V80 SH             | 1     |
| 9   | 0025060306S    | HH collar screw M6x30 TX30      | 5     |
| 10  | C90030024000   | Dowel                           | 2     |
| 11  | C0025060126    | Screw M6x12                     | 1     |
| 12  | C0603061001    | seal ring 6/10/1                | 1     |

186353510

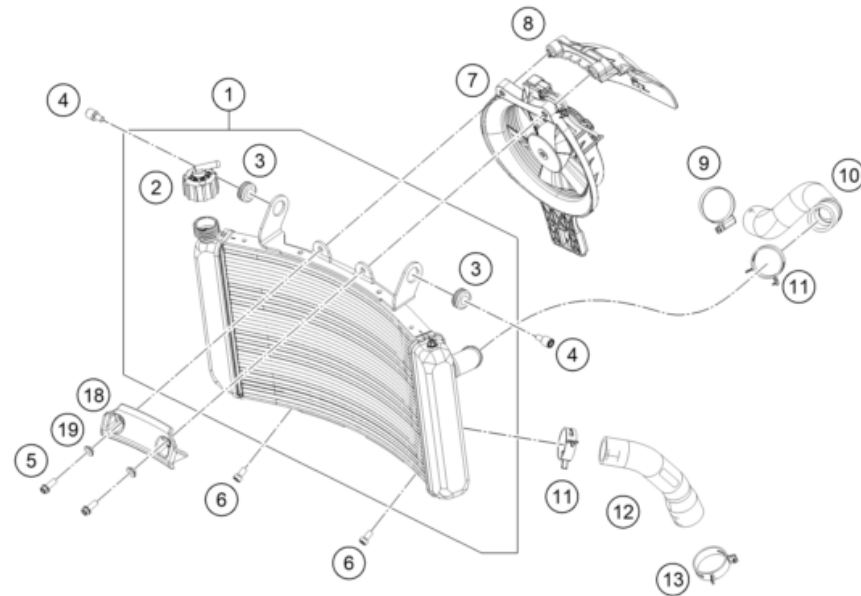
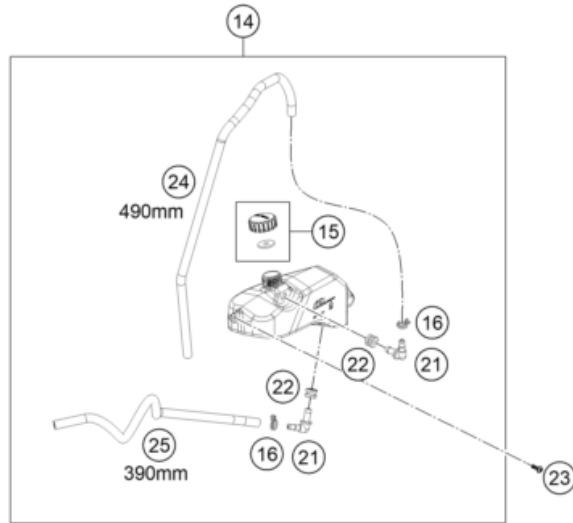
59495

\* NEW PART

X ON DEMAND

# COOLING SYSTEM

# Engine 790 DUKE



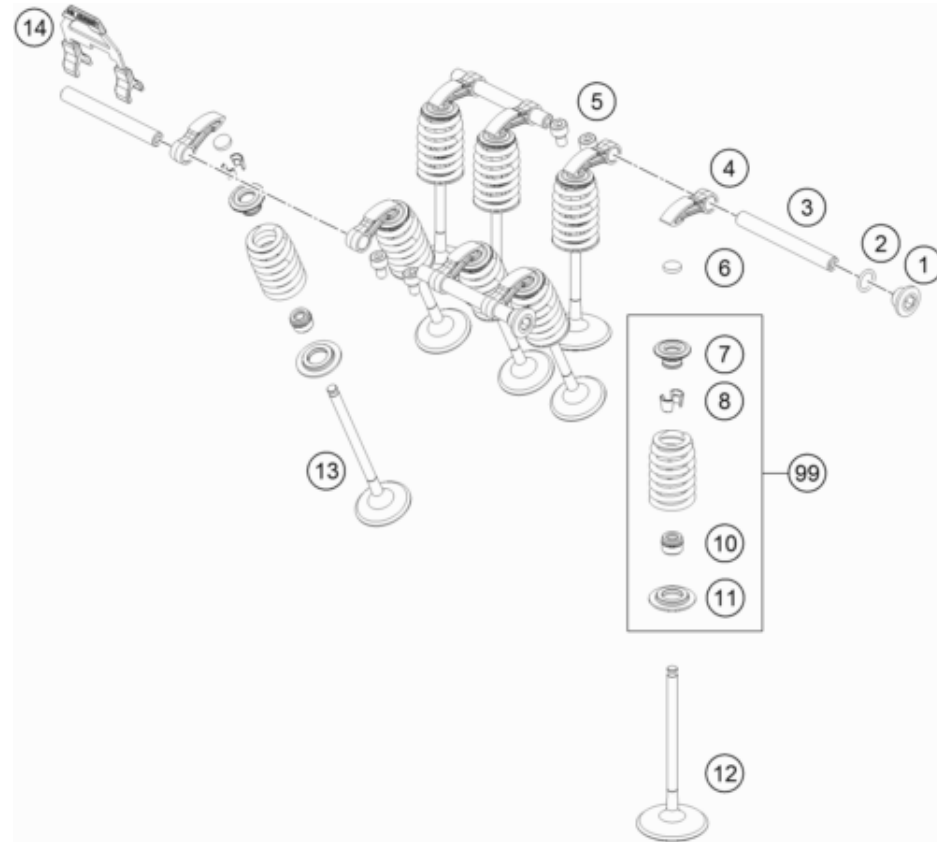
| POS | PARTNUMBER     | PARTNAME                                 | PIECE |
|-----|----------------|--|-------|
| 1   | 63635010100    | Radiator                                 | 1     |
| 2   | 62535009000    | RADIATOR CAP 1,4 BAR                     | 1     |
| 3   | 41001052000    | RUBBER SLEEVE D=12MM                     | 2     |
| 4   | 69035001000    | STUD BOLT M6 11X11 ISA45                 | 2     |
| 5   | 0025060166S    | HH collar screw M6x16 TX30 SL            | 2     |
| 6   | C014580060126S | Cap head bolt ISO 14580 M6x16 self-lock. | 2     |
| 7   | 64135044033    | Fan cover cpl.                           | 1     |
| 8   | 63635042000    | Air deflector, radiator                  | 1     |
| 9   | 10001120000    | CLAMP 25-40 SGT 4                        | 1     |
| 10  | C90735027000   | Pre-formed hose radiator                 | 1     |
| 11  | C0310001229300 | Spring band clamp STD DN32               | 2     |
| 12  | C90735026000   | Pre-formed hose radiator                 | 1     |
| 13  | C0310001234500 | Spring band clamp STD DN38               | 1     |
| 14  | C90735065033   | Reservoir complete                       | 1     |
| 15  | C90735066044   | Cap reservoir cpl.                       | 1     |
| 16  | C90707017000   | Ydnac clamp 10.7mm                       | 2     |
| 18  | 64135032100    | Edge protection radiator                 | 1     |
| 19  | 69004060150    | bushing chain protection                 | 2     |
| 21  | C90735068000   | Winkelstück Ausgl. Behälter              | 2     |
| 22  | C90703065000   | rubber insert                            | 2     |
| 23  | 0081040121     | EJOT Delta PT K40x12                     | 1     |
| 24  | C90735067490   | Hose 6x10 L=490                          | 1     |
| 25  | C90735067390   | Hose 6x10 L=390                          | 1     |

226363530

59498

\* NEW PART

X ON DEMAND



| POS | PARTNUMBER   | PARTNAME                             | PIECE |
|-----|--------------|--------------------------------------|-------|
| 1   | 77236080000  | screw plug                           | 2     |
| 2   | C07700900151 | O-RING 9x1,5 V80 SH                  | 2     |
| 3   | C90036056000 | cam follower shaft                   | 4     |
| 4   | 63536060000  | Cam follower                         | 8     |
| 5   | C0912050083  | Cap head screw, ISO 14579, M5x8-10.9 | 4     |
| 6   | C90036035172 | Shim D=8.9/1.72                      | x     |
| 6   | C90036035176 | Shim D=8.9/1.76                      | x     |
| 6   | C90036035180 | Shim D=8.9/1.80                      | x     |
| 6   | C90036035184 | Shim D=8.9/1.84                      | x     |
| 6   | C90036035188 | Shim D=8.9/1.88                      | x     |
| 6   | C90036035192 | Shim D=8.9/1.92                      | x     |
| 6   | C90036035196 | Shim D=8.9/1.96                      | x     |
| 6   | C90036035200 | Shim D=8.9/2.00                      | x     |
| 6   | C90036035204 | Shim D=8.9/2.04                      | x     |
| 6   | C90036035208 | Shim D=8.9/2.08                      | x     |
| 6   | C90036035212 | Shim D=8.9/2.12                      | x     |
| 6   | C90036035216 | Shim D=8.9/2.16                      | x     |
| 6   | C90036035220 | Shim D=8.9/2.20                      | x     |
| 6   | C90036035224 | Shim D=8.9/2.24                      | x     |
| 6   | C90036035228 | Shim D=8.9/2.28                      | x     |
| 6   | C90036035232 | Shim D=8.9/2.32                      | x     |
| 6   | C90036035236 | Shim D=8.9/2.36                      | x     |
| 6   | C90036035240 | Shim D=8.9/2.40                      | x     |
| 6   | C90036035244 | Shim D=8.9/2.44                      | x     |
| 6   | C90036035248 | Shim D=8.9/2.48                      | x     |
| 6   | C90036035252 | Shim D=8.9/2.52                      | x     |
| 6   | C90036035256 | Shim D=8.9/2.56                      | x     |
| 6   | C90036035260 | Shim D=8.9/2.60                      | x     |
| 7   | C90036032100 | valve spring retainer                | 8     |
| 8   | C90036033000 | valve collet                         | 16    |
| 10  | C90036027100 | valve stem seal                      | 8     |
| 11  | C90036036000 | Seat valve spring                    | 8     |
| 12  | C90036030000 | Intake valve                         | 4     |
| 13  | C90036031000 | exhaust valve                        | 4     |
| 14  | C90036056050 | cam follower clip                    | 1     |
| 99  | C90036028044 | Valve spring kit                     | x     |

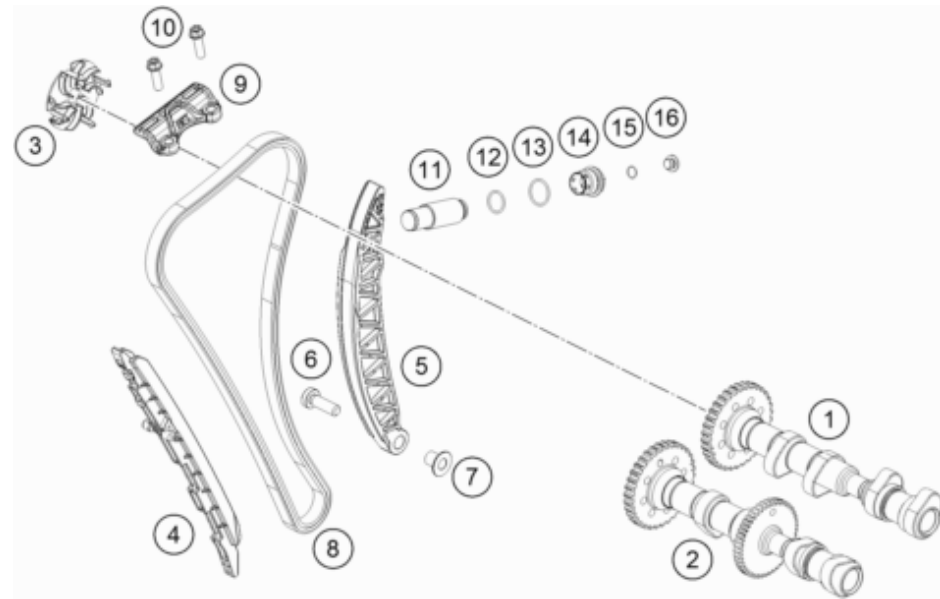
186353610

59505

\* NEW PART

X ON DEMAND





| POS | PARTNUMBER   | PARTNAME                         | PIECE |
|-----|--------------|----------------------------------|-------|
| 1   | C90036009044 | Intake Camshaft                  | 1     |
| 2   | C90036010044 | Exhaust Camshaft                 | 1     |
| 3   | C90036080000 | venting centrifuge               | 1     |
| 4   | 63536001000  | slide bars                       | 1     |
| 5   | 63536002100  | Tension Rail                     | 1     |
| 6   | 0035080256S  | ISA collar screw M8x25 ISA45     | 1     |
| 7   | C90036002150 | Collar bush d8xd10x13.2          | 1     |
| 8   | 63536013100  | Timing chain                     | 1     |
| 9   | 63536005000  | slide bars, top cpl.             | 1     |
| 10  | 0025060206S  | HH collar screw M6x20 TX30       | 2     |
| 11  | 77036003100  | chain tension adjuster           | 1     |
| 12  | C0770180020  | o-ring 18.00x2.00 NBR70          | 1     |
| 13  | C0770180020  | o-ring 18.00x2.00 NBR70          | 1     |
| 14  | C90036008200 | chain tension adjuster plug cpl. | 1     |
| 15  | C0770010010  | o-ring 10.00x1.00 NBR70          | 1     |
| 16  | 77236080000  | screw plug                       | 1     |

186353620

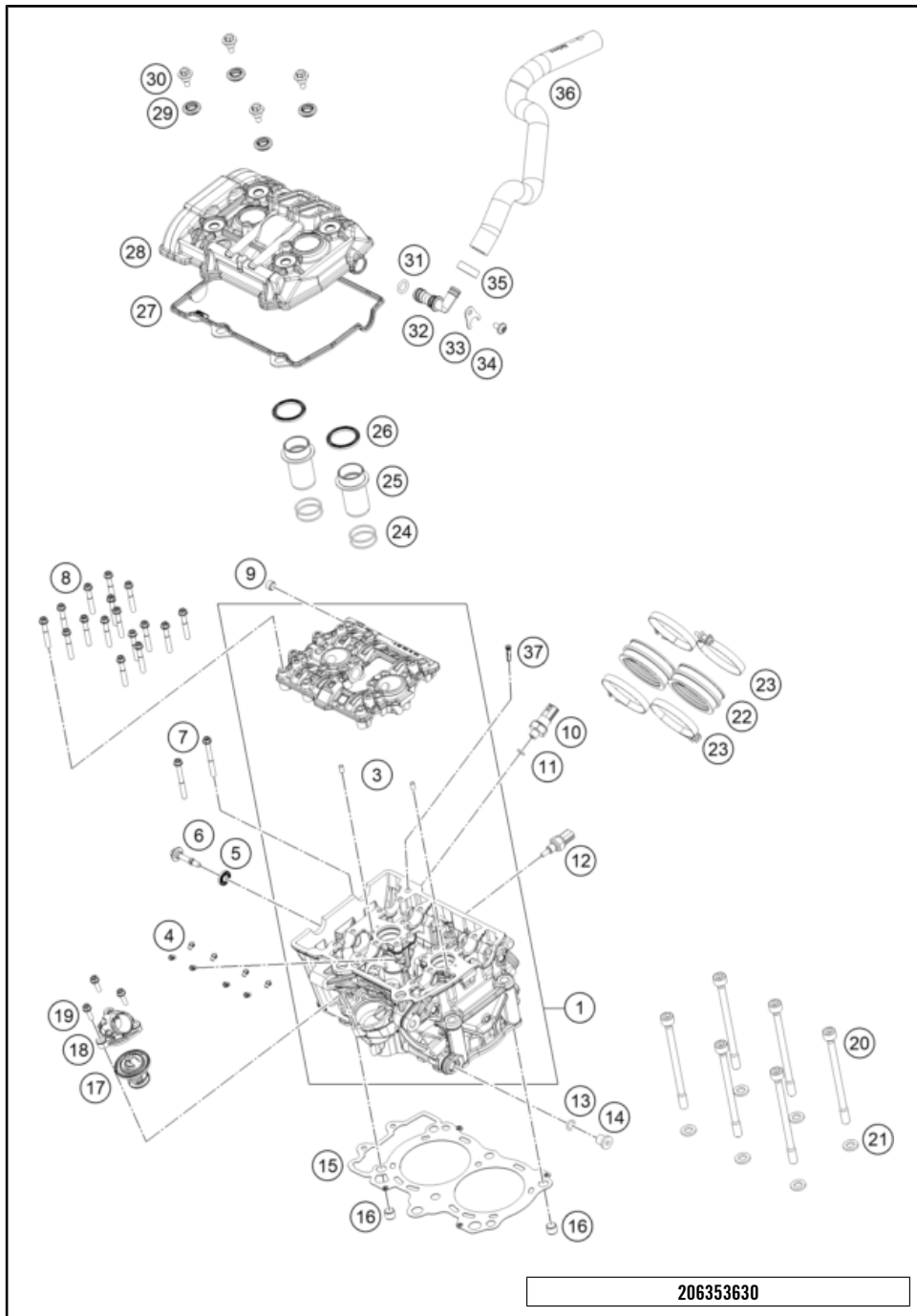
59507

\* NEW PART

X ON DEMAND

# CYLINDER HEAD

# Engine 790 DUKE



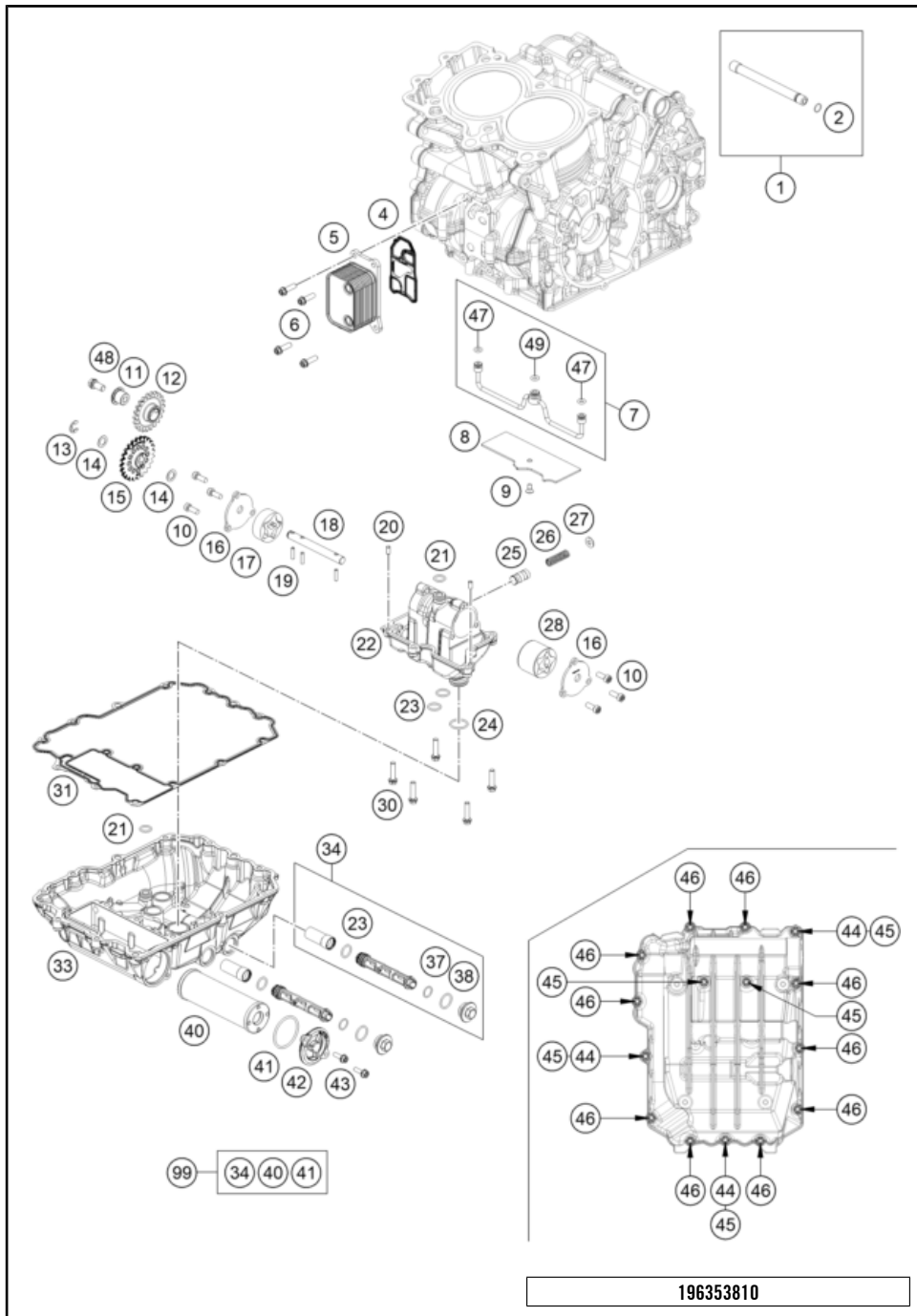
| POS | PARTNUMBER     | PARTNAME                          | PIECE |
|-----|----------------|-----------------------------------|-------|
| 1   | C9003622000024 | Cylinder head complete            | 1     |
| 3   | C0402050980    | needle roller DIN 5402 5x9.8      | 2     |
| 4   | C90030063050   | oil jet 50 M5                     | 8     |
| 5   | C90036052010   | decoupling element                | 1     |
| 6   | 75036055000    | valve mechanism cover screw       | 1     |
| 7   | 0025060556     | HH collar screw M6x55 TX30        | 2     |
| 8   | 0025060405     | HH collar screw M6x40 ISA30       | 16    |
| 9   | 0906100100     | pipe plug DIN 906 M10x1           | 1     |
| 10  | 61238091100    | oil pressure switch "BITRON"      | 1     |
| 11  | C07700900151   | O-RING 9x1,5 V80 SH               | 1     |
| 12  | 79435047000    | water temperature sensor          | 1     |
| 13  | C0770100020    | o-ring 10.00x2.00 silicone        | 1     |
| 14  | 0908120153     | threaded plug DIN 908 M12x1.5     | 1     |
| 15  | C90030036200   | Cylinder head gasket              | 1     |
| 16  | C90030014100   | dowl sleeve 10.2x12.5x10          | 2     |
| 17  | C90035117000   | Thermostat BING 205-66            | 1     |
| 18  | C90035019100   | Water connection                  | 1     |
| 19  | 0025050166S    | HH Collar Screw M5x16 ISA30 SS    | 3     |
| 20  | 78630044000    | cylinder head bolt M10x1.25 L=138 | 6     |
| 21  | C90036089010   | washer 19x10.5x2.5                | 6     |
| 22  | C90036144000   | Intake Sleeve                     | 2     |
| 23  | 61236048000    | hose clamp Gemi 66                | 4     |
| 24  | C0770298178    | O-RING 29,87X1,78 VITON           | 4     |
| 25  | C90036075000   | spark plug shaft insert           | 2     |
| 26  | C90036075050   | spark plug shaft gasket           | 2     |
| 27  | C90036053000   | Valve cover seal                  | 1     |
| 28  | C9003605200033 | valve cover                       | 1     |
| 29  | C90036054160   | RUBBER GASKET FOR SCREW           | 4     |
| 30  | 77336054150    | VALVE COVER SCREW                 | 4     |
| 31  | C0770012030    | O-RING 12,00X3,0 VITON 75         | 1     |
| 32  | C90036081000   | bleeder connector                 | 1     |
| 33  | C90036082150   | connecting angle retaining plate  | 1     |
| 34  | C0025060126    | Screw M6x12                       | 1     |
| 35  | C00050198706   | variable one-year clamp 19.8mm    | 1     |
| 36  | C90030387000   | enigne breather hose              | 1     |
| 37  | C90038016000   | Oil screen                        | 1     |

206353630

59509

\* NEW PART

X ON DEMAND



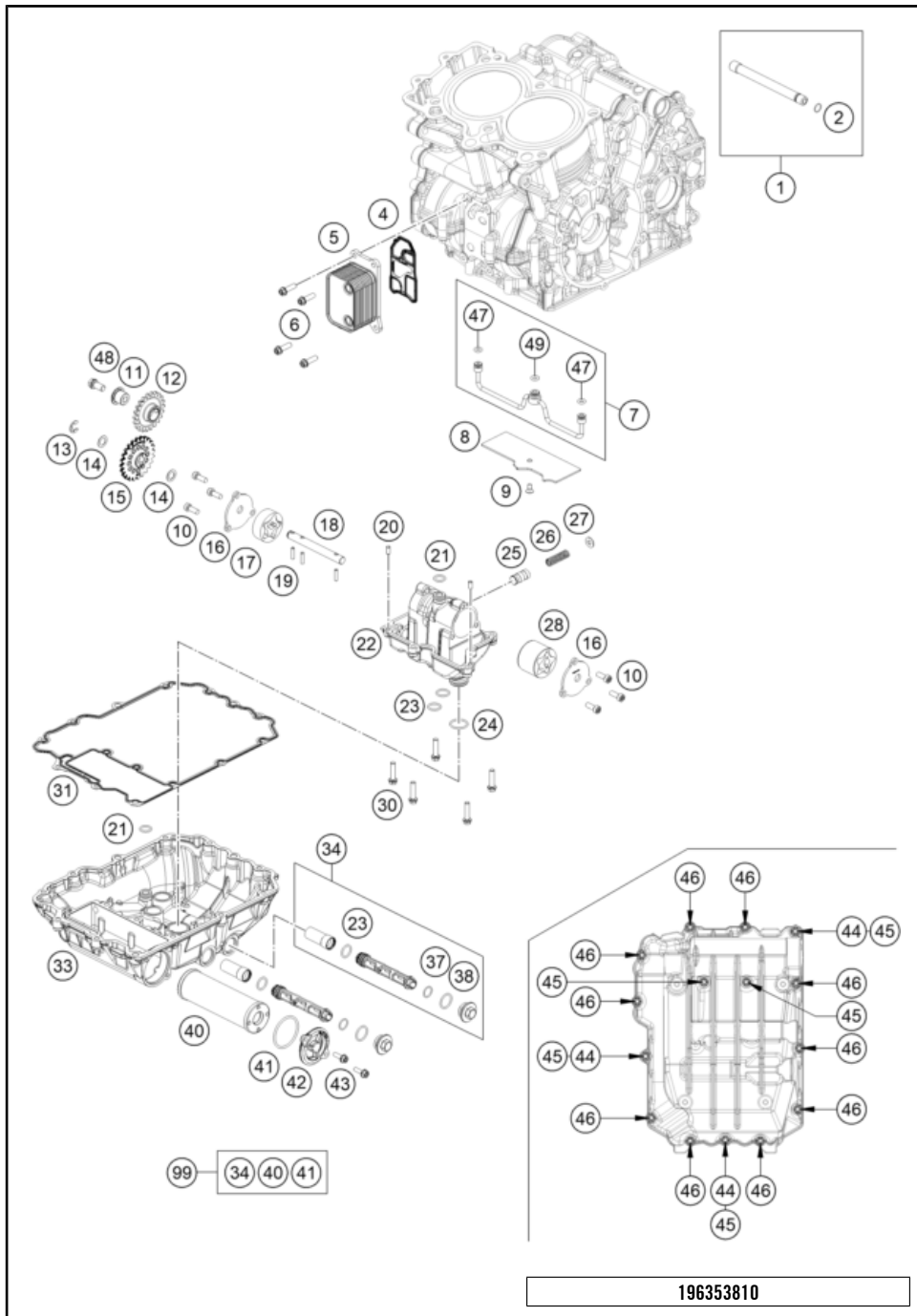
196353810

| POS | PARTNUMBER     | PARTNAME                                 | PIECE |
|-----|----------------|--|-------|
| 1   | C90030065000   | Oil spray tube compl.                    | 1     |
| 2   | C0770010010    | o-ring 10.00x1.00 NBR70                  | 1     |
| 4   | C90038051000   | gasket with support sheet                | 1     |
| 5   | C90038050000   | oil-water-heater exchanger               | 1     |
| 6   | 0025060206S    | HH collar screw M6x20 TX30               | 4     |
| 7   | C90038035000   | oil line                                 | 1     |
| 8   | C90030086010   | pressure plate                           | 1     |
| 9   | 0019050121S    | INT. TORX FLAT HEAD M5X12 T25            | 1     |
| 10  | C014580060126S | Cap head bolt ISO 14580 M6x16 self-lock. | 6     |
| 11  | C90038003000   | Bearing bolt                             | 1     |
| 12  | C90038001022   | oil pump idler wheel 22 teeth cpl.       | 1     |
| 13  | C0799080000    | Lock washer DIN 6799 - RS 8              | 1     |
| 14  | C90038007010   | washer 10x16x0.5                         | 1     |
| 15  | C90038001224   | Oil pump gear 24T                        | 1     |
| 16  | C90038008050   | Oil pump cover                           | 2     |
| 17  | C90038009014   | Eaton pump set 14 mm                     | 1     |
| 18  | C90038002000   | Oil pump shaft                           | 1     |
| 19  | C0402041580    | Needle roller 4x15.8 G2 NRB              | 3     |
| 20  | C0402050980    | needle roller DIN 5402 5x9.8             | 2     |
| 21  | C0770120020    | O-ring 12x2                              | 2     |
| 22  | C90038012000   | Oil pump housing                         | 1     |
| 23  | C0770140200    | O-ring 14x2                              | 4     |
| 24  | C0770020020    | O-ring 20x2 VITON                        | 1     |
| 25  | C90038128000   | Control piston                           | 1     |
| 26  | C90038026000   | Oil compression spring                   | 1     |
| 27  | C90037073000   | Shim                                     | 1     |
| 28  | C90038010000   | Eaton pump set 30 mm                     | 1     |
| 30  | 0025060256     | HH collar screw M6x25 TX30               | 5     |
| 31  | C90030086000   | oil sump gasket                          | 1     |
| 33  | C9003008500024 | oil pan                                  | 1     |
| 34  | 61238021100    | oil screen cpl.                          | 2     |
| 37  | 0770125015     | O-RING 12,5X1,5 NBR                      | 2     |
| 38  | 0770170200     | O-RING 17,00X2,00                        | 2     |
| 40  | C90038015200   | oil filter                               | 1     |
| 41  | C07700390261   | O-RING 39,34X2,62                        | 1     |
| 42  | C90038041200   | oil filter cover                         | 1     |
| 43  | 0025050166     | HH collar screw M5x16 TX30               | 2     |
| 44  | C90030024000   | Dowel                                    | 3     |

59510

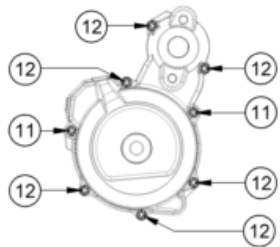
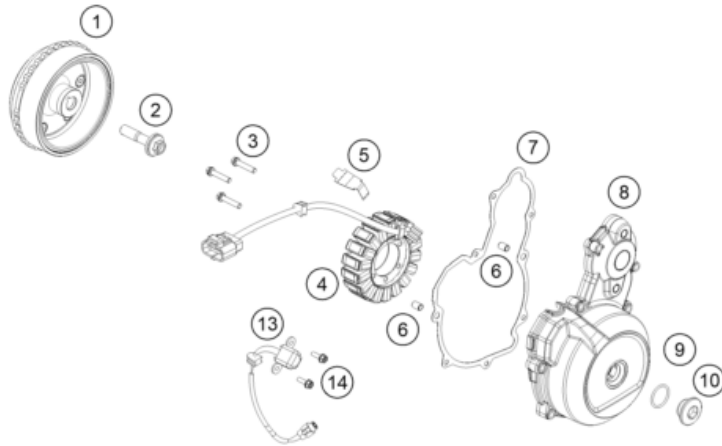
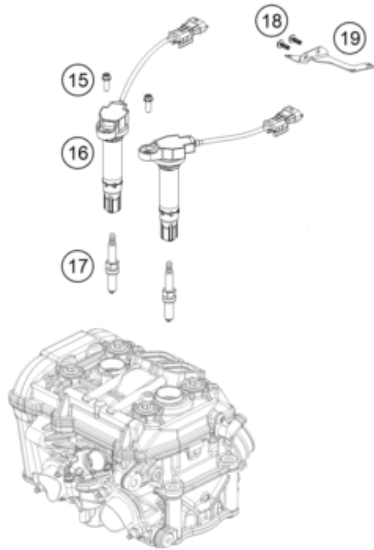
\* NEW PART

X ON DEMAND



| POS | PARTNUMBER   | PARTNAME                   | PIECE |
|-----|--------------|----------------------------|-------|
| 45  | 0025060356   | HH collar screw M6x35 TX30 | 5     |
| 46  | 0025060306   | HH collar screw M6x30 TX30 | 10    |
| 47  | C0770060025  | O-ring 6x2,5               | 2     |
| 48  | 0025080166   | HH COLLAR SCREW M8X16 TX40 | 1     |
| 49  | C0770070025  | O-ring 7x2,5               | 1     |
| 99  | C00050000068 | Oil filter service kit     | x     |

\* NEW PART X ON DEMAND



| POS | PARTNUMBER     | PARTNAME                        | PIECE |
|-----|----------------|---------------------------------|-------|
| 1   | C90039105000   | rotor cpl.                      | 1     |
| 2   | 60339003000    | special screw M12x1.5 WS15      | 1     |
| 3   | 0025060306S    | HH collar screw M6x30 TX30      | 3     |
| 4   | C90039004000   | stator                          | 1     |
| 5   | C90039040020   | generator line bracket          | 1     |
| 6   | C90030024000   | Dowel                           | 2     |
| 7   | C90030040000   | ignition cover gasket           | 1     |
| 8   | C9003010200041 | Generator cover                 | 1     |
| 9   | C07700240251   | o-ring 24.00x2.50 Viton         | 1     |
| 10  | C90030094000   | threaded plug M24x1.5 PA 6.6    | 1     |
| 11  | 0025060356     | HH collar screw M6x35 TX30      | 2     |
| 12  | 0025060306     | HH collar screw M6x30 TX30      | 6     |
| 13  | C90039034000   | pulse generator KOKUSAN 4K3-A/B | 1     |
| 14  | 0025050166S    | HH Collar Screw M5x16 ISA30 SS  | 2     |
| 15  | 0025060166     | HH collar screw M6x16 TX30      | 2     |
| 16  | C90039006100   | Stick coil                      | 2     |
| 17  | 77839093000    | spark plug                      | 2     |
| 18  | 0081050141     | EJOT PT screw K50x14            | 2     |
| 19  | C90011038000   | retaining bracket SLS cpl.      | 1     |

216353911

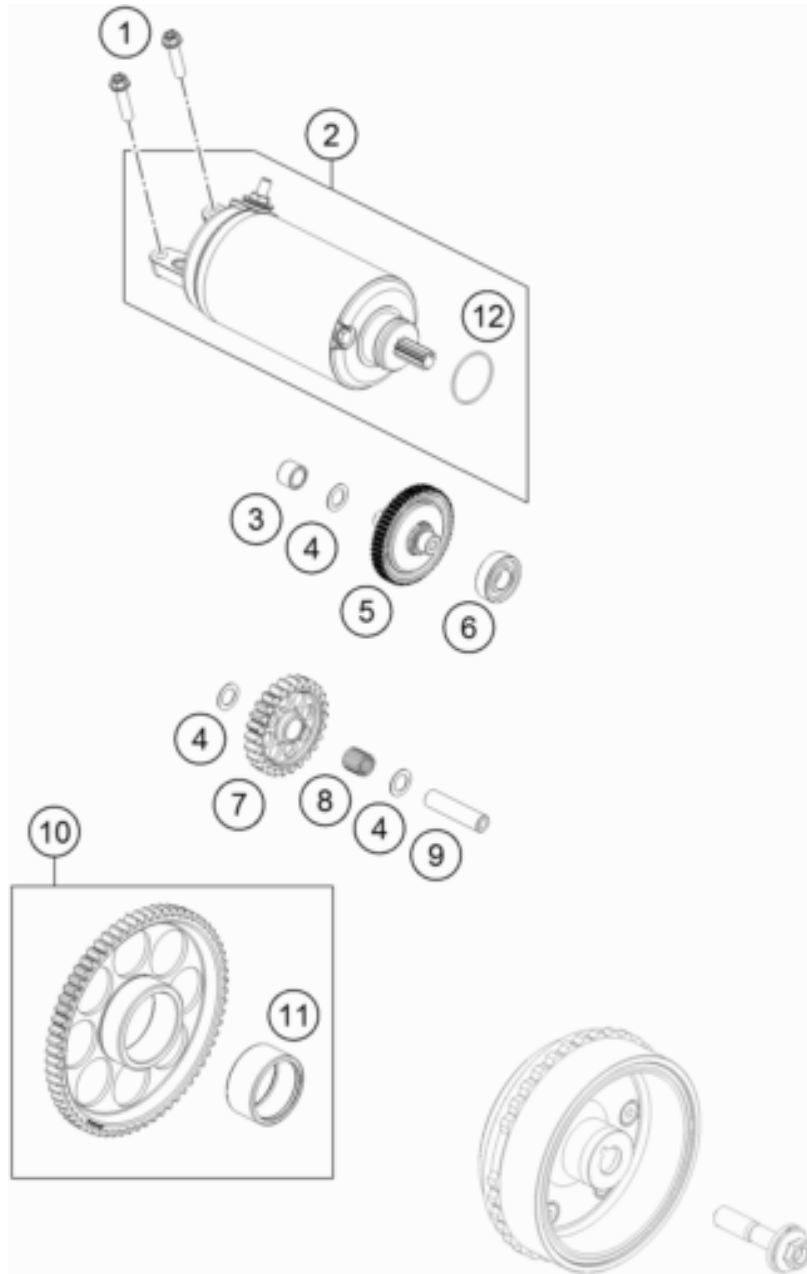
59511

\* NEW PART

X ON DEMAND

# ELECTRIC STARTER

Engine 790 DUKE



| POS | PARTNUMBER   | PARTNAME                              | PIECE |
|-----|--------------|---------------------------------------|-------|
| 1   | 0025060256   | HH collar screw M6x25 TX30            | 2     |
| 2   | C90040001000 | starter                               | 1     |
| 3   | C0618101410  | needle sleeve HK 1010 10x14x10        | 1     |
| 4   | C90038007010 | washer 10x16x0.5                      | 3     |
| 5   | 60340117200  | Torque limiter 10/55 cml.             | 1     |
| 6   | C0625060016  | deep groove ball bearing 6001.2RSR C3 | 1     |
| 7   | C90040022000 | Starter idler gear 26T                | 1     |
| 8   | C90040090000 | needle roller and cage K 10x13x13 TN  | 1     |
| 9   | C90040029000 | pivot pin                             | 1     |
| 10  | 63540020000  | free wheel gear cpl.                  | 1     |
| 11  | 0618354220   | NEEDLE BUSH HK3520 35/42/20           | 1     |
| 12  | C0770244031  | O-ring 24.40x3.10 NBR 70              | 1     |

186354010

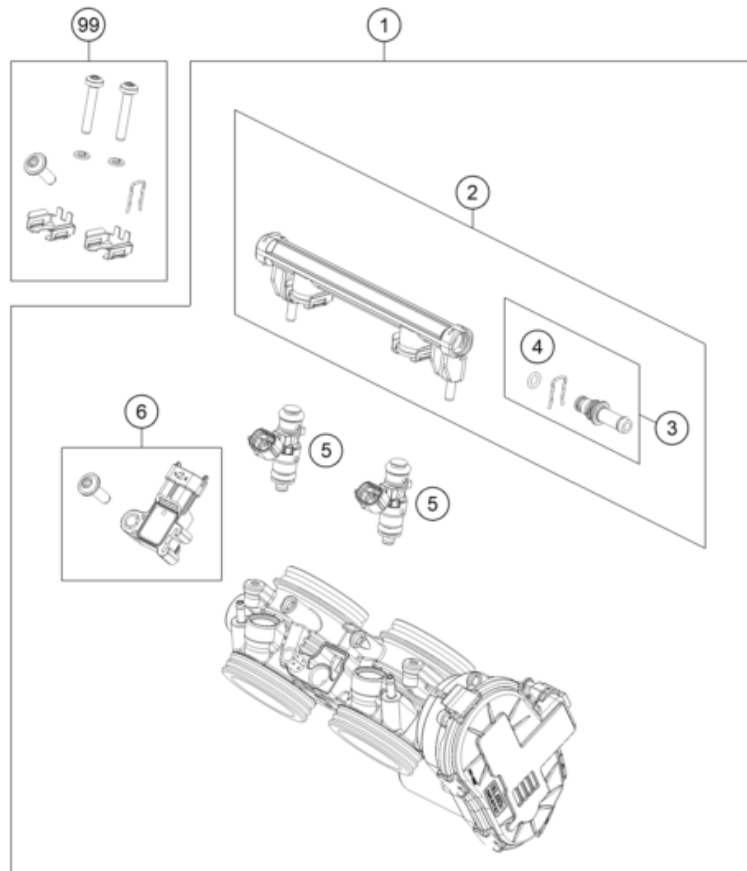
59512

\* NEW PART

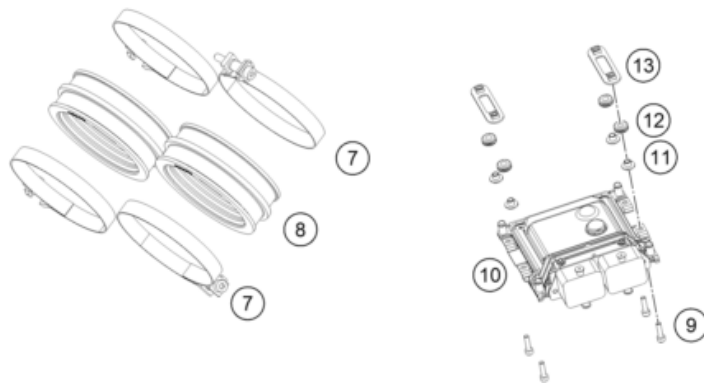
X ON DEMAND

# THROTTLE BODY

# Engine 790 DUKE



| POS | PARTNUMBER   | PARTNAME                            | PIECE |
|-----|--------------|-------------------------------------|-------|
| 1   | A65441001000 | Throttle body                       | 1     |
| 2   | 63541013050  | Fuel pipe                           | 1     |
| 3   | 63541013044  | Fuel connector cmpl.                | 1     |
| 4   | 63541013010  | Square and dust seal                | 1     |
| 5   | 90841123000  | FUEL INJECTOR                       | 2     |
| 6   | 63641085044  | MAP sensor, cmpl.                   | 1     |
| 7   | 61236048000  | hose clamp Gemi 66                  | 4     |
| 8   | C90036144000 | Intake Sleeve                       | 2     |
| 9   | 0912040163S  | AH screw DIN0912 M4x16 self-locking | 4     |
| 10  | 63541031100  | EFI control unit                    | 1     |
| 11  | C90741030010 | Collar bushing 4.5x6x12x6.3         | 4     |
| 12  | C90741030000 | Rubber band control unit            | 4     |
| 13  | C90741029000 | Retaining bracket, ECU cmpl.        | 2     |
| 99  | 63641099000  | Smallpart kit                       | 1     |



186354110

59513

\* NEW PART

X ON DEMAND

# KTM.COM



P2C9006M00K24EN

KTM Sportmotorcycle GmbH  
5230 Mattighofen, Austria  
[www.ktm.com](http://www.ktm.com)



Art. Nr.: P2C9006M00K24EN 25. Mär 2022